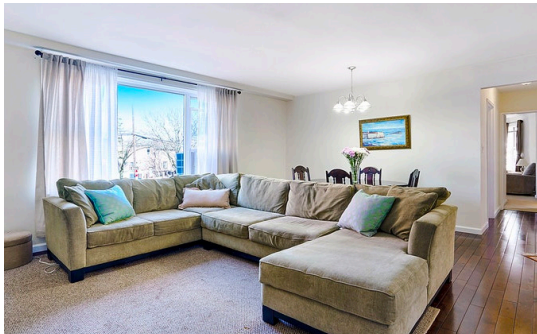


# First Quarter 2019 Market Report Rego Park Apartments

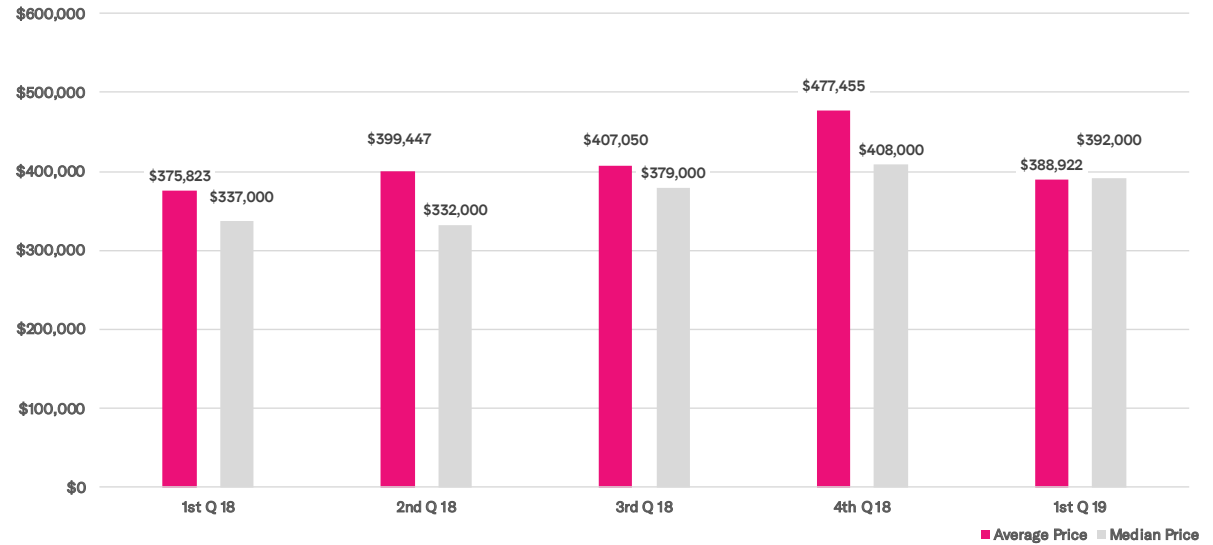
Apartment prices averaged \$388,922, a 3% improvement compared to a year ago.

The number of sales fell 8% to 89.

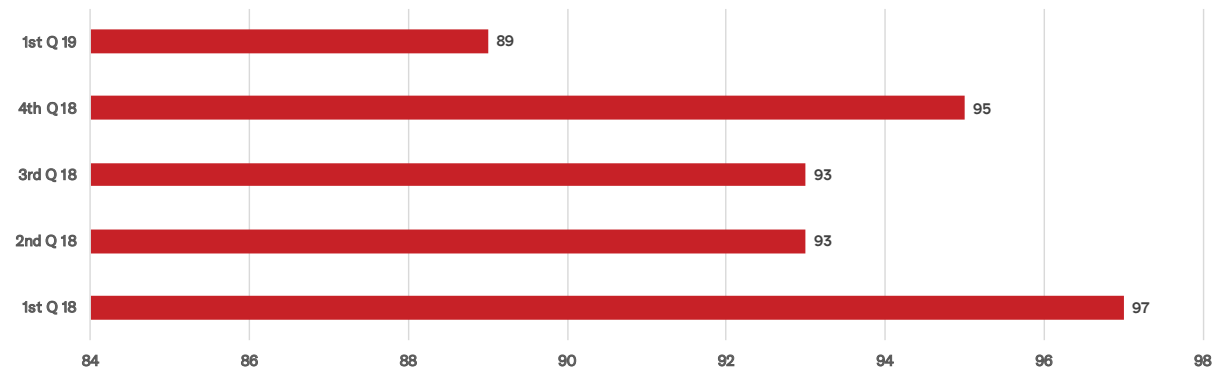


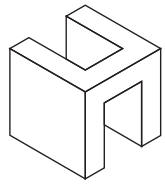
halstead.com WEB# 18334562

## Average & Median Sales Price



## Number of Sales





# First Quarter 2019 Market Report Rego Park 1-3 Family Houses

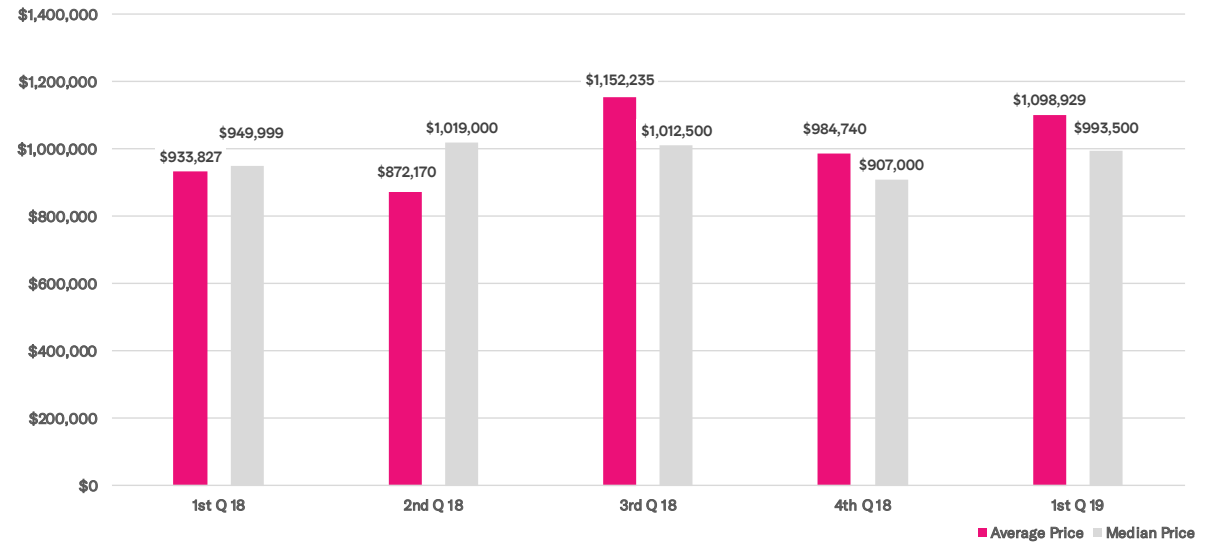
Both the average and median prices rose from 2018's first quarter.

The market was 30% less active than a year ago, with just 14 closings reported.

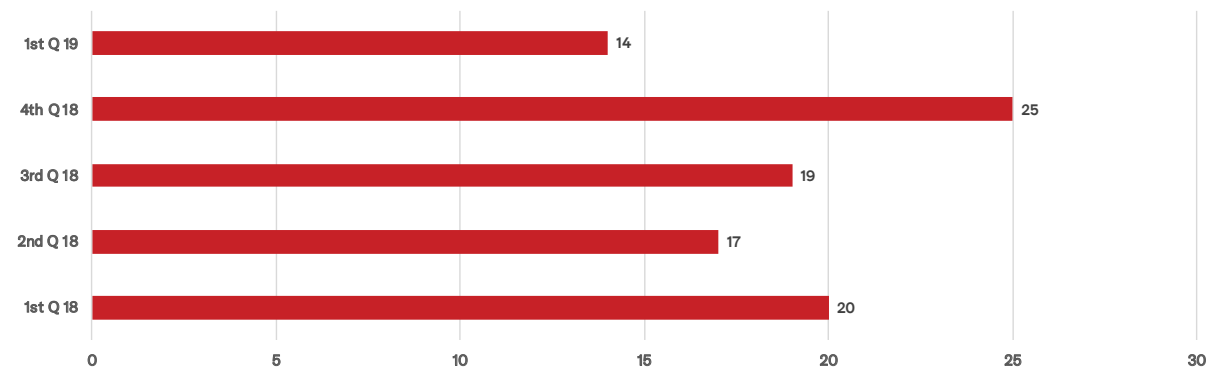


halstead.com WEB# 18438585

## Average & Median Sales Price



## Number of Sales



# HALSTEAD

REAL ESTATE

## OFFICES

### MANHATTAN PARK AVENUE

499 Park Avenue  
New York, NY 10022  
212.734.0010

### EAST SIDE

770 Lexington Avenue  
New York, NY 10065  
212.317.7800

### WEST SIDE

408 Columbus Avenue  
New York, NY 10024  
212.769.3000

### VILLAGE

831 Broadway  
New York, NY 10003  
212.381.6500

### SOHO

451 West Broadway  
New York, NY 10012  
212.381.4200

### HARLEM

2169 Frederick Douglass Boulevard  
New York, NY 10026  
212.381.2570

### WASHINGTON HEIGHTS

819 West 187th Street  
New York, NY 10033  
212.381.2452

### BRONX

#### RIVERDALE JOHNSON

3531 Johnson Avenue  
Riverdale, NY 10463  
718.878.1700

#### RIVERDALE MOSHOLU

5626 Mosholu Avenue  
Riverdale, NY 10471  
718.549.4116

### BROOKLYN BROOKLYN HEIGHTS

122 Montague Street  
Brooklyn, NY 11201  
718.613.2000

### PARK SLOPE

160 7th Avenue  
Brooklyn, NY 11215  
718.878.1960

### COBBLE HILL

162 Court Street  
Brooklyn, NY 11201  
718.613.2020

### BEDFORD STUYVESANT

1191 Bedford Avenue,  
Brooklyn, NY 11216  
718.878.1750

### SOUTH SLOPE

1214 8th Avenue  
Brooklyn, NY 11215  
718.878.1888

### FORT GREENE

725 Fulton Street  
Brooklyn, NY 1127  
718.613.2800

### BAY RIDGE

8324 4th Avenue  
Brooklyn, NY 11209  
718.878.1880

### QUEENS

#### LONG ISLAND CITY

47-12 Vernon Boulevard  
Queens, NY 1110  
718.878.1800

#### FOREST HILLS

108-23 Ascan Avenue  
Forest Hills, NY 11375  
718-520-0303

### HUDSON VALLEY HUDSON

526 Warren Street  
Hudson, NY 12534  
518.828.0181

### CONNECTICUT DARIEN

671 Boston Post Road  
Darien, CT 06820  
203.655.1418

### NEW CANAAN - ELM STREET

183 Elm Street  
New Canaan, CT 06840  
203.966.7800

### NEW CANAAN - SOUTH AVENUE

6 South Avenue  
New Canaan, CT 06840  
203.966.7772

### ROWAYTON

140 Rowayton Avenue  
Rowayton, CT 06853  
203.655.1418

### GREENWICH

125 Mason Street  
Greenwich, CT 06830  
203.869.8100

### STAMFORD

1099 High Ridge Road  
Stamford, CT 06905  
203.329.8801

### WESTPORT

379 Post Road East  
Westport, CT 06880  
203.221.0666

### WILTON

21 River Road  
Wilton, CT 06897  
203.762.8118

### NEW JERSEY HOBOKEN

200 Washington Street  
Hoboken, NJ 07030  
201.478.6700

### MONTCLAIR

635 Valley Road,  
Montclair, NJ 07030  
973.744.6033

### HAMPTONS EAST HAMPTON

2 Newtown Lane  
East Hampton, NY 11937  
631.324.6100

### SOUTHAMPTON

31 Main Street  
Southampton, NY 11968  
631.283.2883

### CORPORATE COMMERCIAL SALES

770 Lexington Avenue  
New York, NY 10065  
212.381.3208

### DEVELOPMENT MARKETING

445 Park Avenue  
New York, NY 10022  
212.521.5703

### GLOBAL SERVICES

770 Lexington Avenue  
New York, NY 10065  
212.381.6521

### MANAGEMENT COMPANY

770 Lexington Avenue, 7th floor  
New York, NY, 10065  
212.508.7272

Prepared by **Gregory Heym,**  
**Chief Economist,**  
**Halstead Queens, LLC**

©2019 by Halstead Queens, LLC.  
All Rights Reserved. This information  
may not be copied, used or distributed  
without Halstead's consent. While  
information is believed true, no guaranty  
is made of accuracy.

