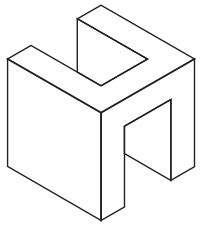


January 2019 Absorption Report Manhattan Apartments



HALSTEAD
REAL ESTATE

LUXURY PORTFOLIO
INTERNATIONAL

Leading REAL ESTATE
COMPANIES
OF THE WORLD.

January 2019 Highlights

The absorption rate fell to **6.3** months in January, but remained 24% higher than a year ago.

The absorption rate for condos **rose** 20% from January 2018, while the rate for co-ops climbed 34%.

Northern Manhattan remains the tightest market in Manhattan, with just a **4.4**-month supply of apartments for sale.



Halstead.com WEB# 18679724



Halstead.com WEB# 19345118

Definitions

Listings: Number of active listings transmitted through the Real Estate Board of New York's listing service at the beginning of the month.

Absorption Rate: How many months it would take to sell all active listings in a given market. We calculate it by dividing the number of listings by the average number of closings over the prior 6 months. Historically, an absorption rate between 6-9 months indicates a balanced market.

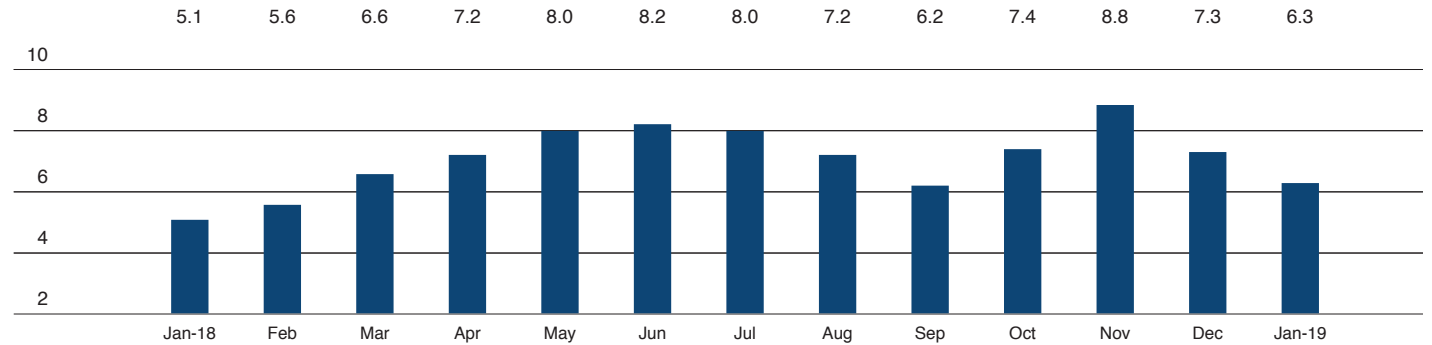
Cover Property: Halstead.com WEB# 19376200

Manhattan



Halstead.com WEB# 19046736

Absorption Rate in Months: All Apartments



Condominiums

	JANUARY 2019		DECEMBER 2018		JANUARY 2018	
	LISTINGS	ABSORPTION RATE	LISTINGS	ABSORPTION RATE	LISTINGS	ABSORPTION RATE
Studio	208	5.0	229	5.5	194	4.5
1-Bedroom	865	6.2	970	6.9	767	4.8
2-Bedroom	957	7.9	1,063	8.5	923	6.3
3+Bedroom	985	11.1	1,129	13.7	963	10.0
Loft	133	9.1	165	11.3	214	8.3
All	3,148	7.8	3,556	8.8	3,061	6.5

Cooperatives

	JANUARY 2019		DECEMBER 2018		JANUARY 2018	
	LISTINGS	ABSORPTION RATE	LISTINGS	ABSORPTION RATE	LISTINGS	ABSORPTION RATE
Studio	376	4.3	408	4.6	234	2.5
1-Bedroom	928	4.5	1,125	5.5	630	3.0
2-Bedroom	757	5.1	908	6.1	600	3.9
3+Bedroom	557	7.9	676	9.7	524	7.5
Loft	126	7.2	153	8.4	185	5.1
All	2,744	5.2	3,270	6.2	2,173	3.9



East Side

Generally 59th Street to 96th Street,
Fifth Avenue to the East River

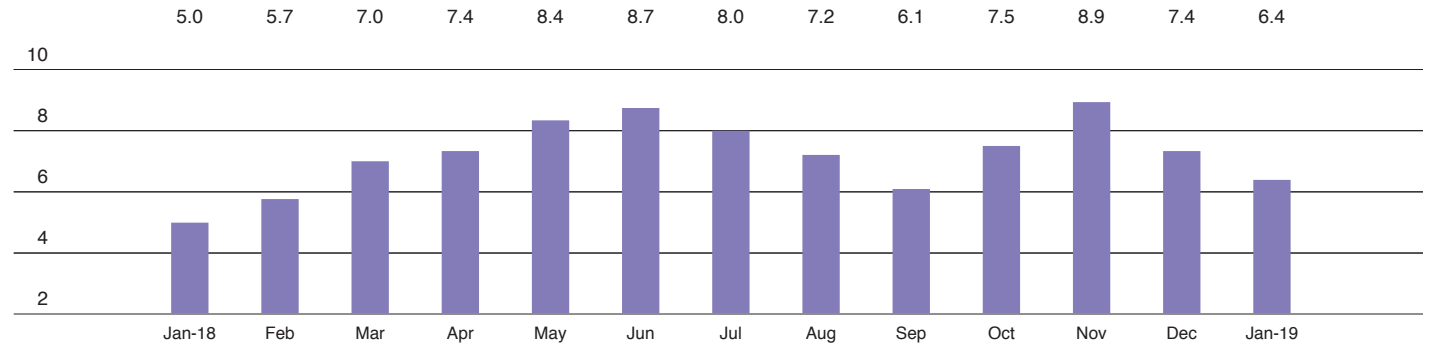


Halstead.com WEB# 19219809



Halstead.com WEB# 18339549

Absorption Rate in Months: All Apartments



Condominiums

	JANUARY 2019		DECEMBER 2018		JANUARY 2018	
	LISTINGS	ABSORPTION RATE	LISTINGS	ABSORPTION RATE	LISTINGS	ABSORPTION RATE
Studio	21	3.9	25	5.0	19	3.5
1-Bedroom	112	6.9	131	7.3	83	3.6
2-Bedroom	113	6.5	124	7.3	124	5.0
3+Bedroom	170	8.9	190	11.8	156	9.6
All	416	7.2	470	8.4	382	5.4

Cooperatives

	JANUARY 2019		DECEMBER 2018		JANUARY 2018	
	LISTINGS	ABSORPTION RATE	LISTINGS	ABSORPTION RATE	LISTINGS	ABSORPTION RATE
Studio	93	5.4	99	5.4	59	2.9
1-Bedroom	264	5.5	304	6.0	184	3.3
2-Bedroom	256	5.5	309	7.2	209	4.9
3+Bedroom	264	7.9	312	9.5	252	8.6
All	877	6.0	1,024	7.1	704	4.7



West Side

Generally 59th to 110th Street,
Hudson River to west of Fifth Avenue

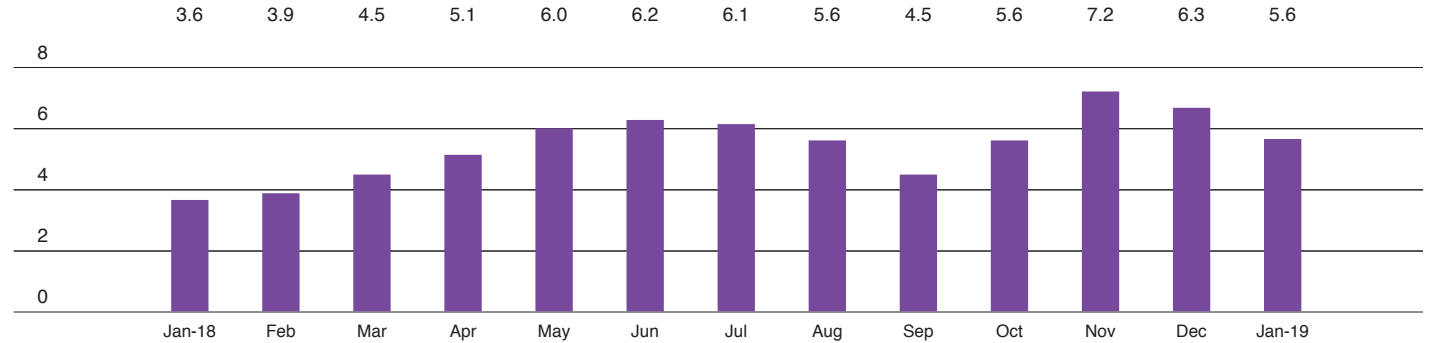


Halstead.com WEB# 19162124



Halstead.com WEB# 18698020

Absorption Rate in Months: All Apartments



Condominiums

	JANUARY 2019		DECEMBER 2018		JANUARY 2018	
	LISTINGS	ABSORPTION RATE	LISTINGS	ABSORPTION RATE	LISTINGS	ABSORPTION RATE
Studio	24	4.8	26	5.0	19	4.2
1-Bedroom	104	5.8	116	5.9	79	2.7
2-Bedroom	113	7.6	136	8.4	116	4.0
3+Bedroom	192	12.4	217	13.0	146	6.5
All	433	8.1	495	8.6	360	4.3

Cooperatives

	JANUARY 2019		DECEMBER 2018		JANUARY 2018	
	LISTINGS	ABSORPTION RATE	LISTINGS	ABSORPTION RATE	LISTINGS	ABSORPTION RATE
Studio	52	3.7	53	3.8	25	1.8
1-Bedroom	129	3.4	151	4.0	108	2.9
2-Bedroom	152	4.6	177	5.1	106	2.9
3+Bedroom	108	6.4	141	8.4	98	4.9
All	441	4.3	522	5.0	337	3.1



Midtown East

Generally 34th to 59th Street,
Fifth Avenue to the East River

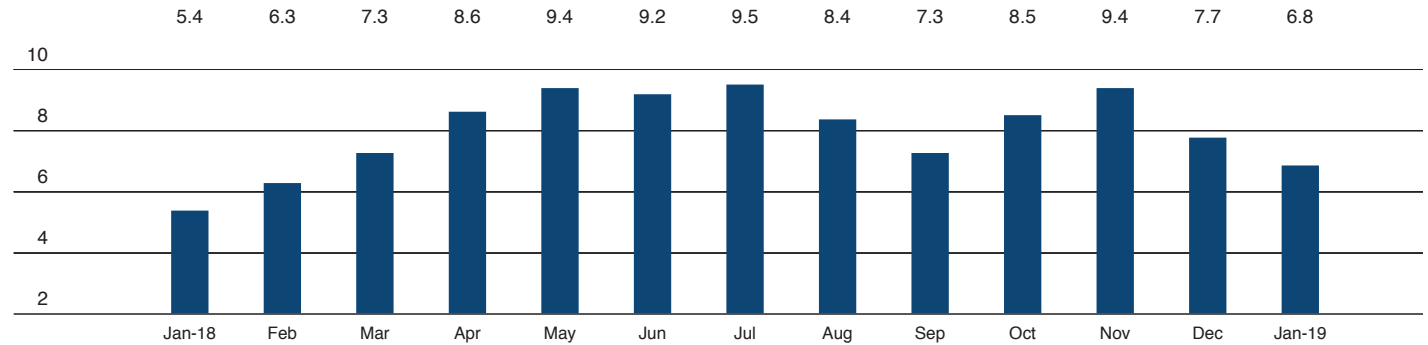


Halstead.com WEB# 16881167



Halstead.com WEB# 18682863

Absorption Rate in Months: All Apartments



Condominiums

	JANUARY 2019		DECEMBER 2018		JANUARY 2018	
	LISTINGS	ABSORPTION RATE	LISTINGS	ABSORPTION RATE	LISTINGS	ABSORPTION RATE
Studio	24	3.1	25	3.4	28	5.8
1-Bedroom	129	5.4	142	6.1	132	6.4
2-Bedroom	150	10.2	160	11.9	113	8.2
3+Bedroom	90	12.6	97	12.9	111	10.2
All	393	7.3	424	8.2	384	7.7

Cooperatives

	JANUARY 2019		DECEMBER 2018		JANUARY 2018	
	LISTINGS	ABSORPTION RATE	LISTINGS	ABSORPTION RATE	LISTINGS	ABSORPTION RATE
Studio	88	4.4	96	4.5	49	2.0
1-Bedroom	201	6.0	242	7.2	124	3.4
2-Bedroom	119	6.6	144	8.2	111	6.0
3+Bedroom	78	15.6	89	17.2	69	11.8
All	486	6.4	571	7.4	353	4.1



Midtown West

Generally 34th to 59th Street,
Hudson River to west of Fifth Avenue



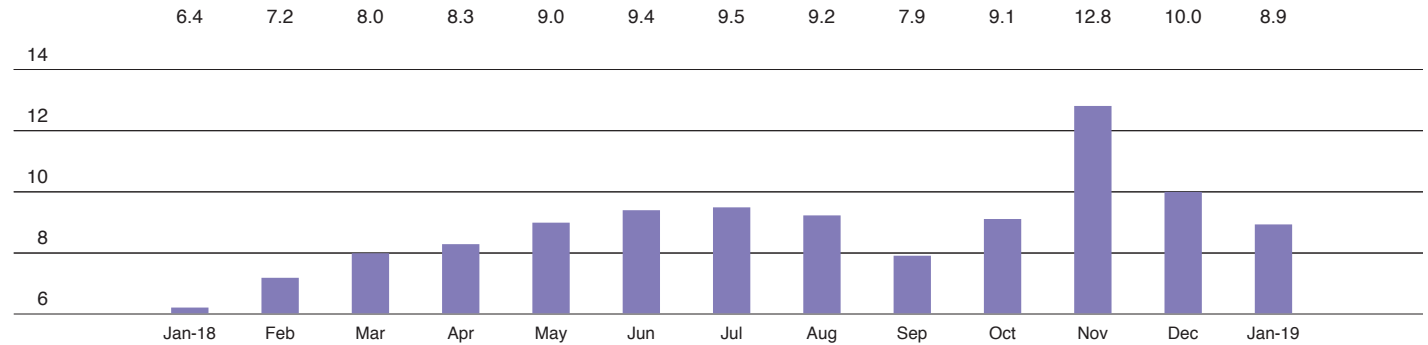
Halstead.com WEB# 19371206



Halstead.com WEB# 19030790



Absorption Rate in Months: All Apartments



Condominiums

	JANUARY 2019		DECEMBER 2018		JANUARY 2018	
	LISTINGS	ABSORPTION RATE	LISTINGS	ABSORPTION RATE	LISTINGS	ABSORPTION RATE
Studio	43	8.1	44	7.3	27	3.9
1-Bedroom	136	7.4	151	8.7	118	5.4
2-Bedroom	134	11.3	136	10.9	124	7.5
3+Bedroom	107	23.8	119	37.6	92	23.0
All	420	10.5	450	11.5	361	7.3

Cooperatives

	JANUARY 2019		DECEMBER 2018		JANUARY 2018	
	LISTINGS	ABSORPTION RATE	LISTINGS	ABSORPTION RATE	LISTINGS	ABSORPTION RATE
Studio	28	4.9	28	4.8	19	3.3
1-Bedroom	48	5.0	52	6.2	30	3.8
2-Bedroom	30	7.8	33	7.6	19	5.2
3+Bedroom	9	18.0	14	42.0	7	8.4
All	115	5.8	127	6.7	75	4.1

Downtown

34th - 14th Street

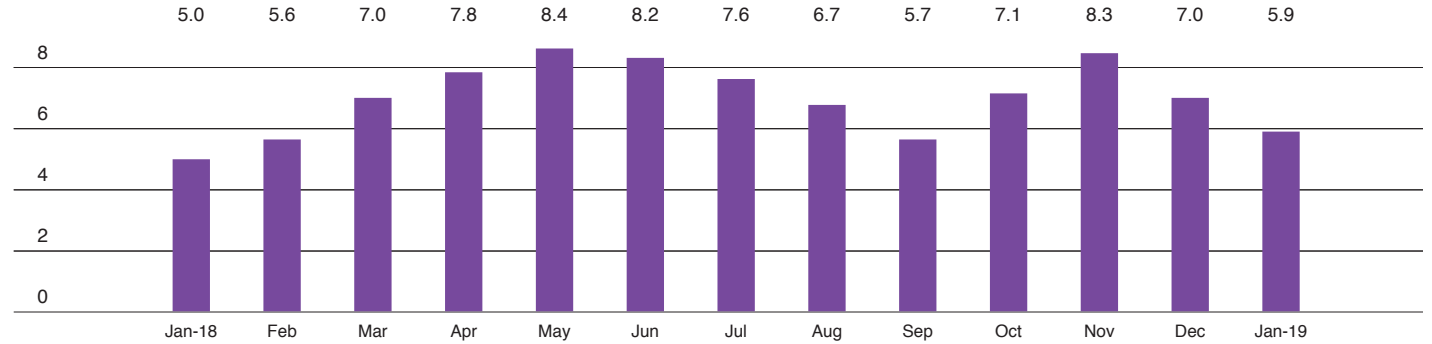


Halstead.com WEB# 19040118



Halstead.com WEB# 19204800

Absorption Rate in Months: All Apartments



Condominiums

	JANUARY 2019		DECEMBER 2018		JANUARY 2018	
	LISTINGS	ABSORPTION RATE	LISTINGS	ABSORPTION RATE	LISTINGS	ABSORPTION RATE
Studio	21	5.7	24	7.6	18	3.5
1-Bedroom	102	5.3	119	5.4	84	3.8
2-Bedroom	133	6.7	157	7.9	137	6.5
3+Bedroom	132	15.5	145	20.2	147	12.4
Loft	27	7.4	28	8.4	53	7.2
All	415	7.5	473	8.5	439	6.5

Cooperatives

	JANUARY 2019		DECEMBER 2018		JANUARY 2018	
	LISTINGS	ABSORPTION RATE	LISTINGS	ABSORPTION RATE	LISTINGS	ABSORPTION RATE
Studio	66	4.4	73	4.9	38	2.5
1-Bedroom	94	3.6	134	5.2	79	2.9
2-Bedroom	56	5.0	71	6.2	27	2.3
3+Bedroom	22	9.4	31	13.3	22	7.8
Loft	28	4.9	34	5.5	58	7.0
All	266	4.4	343	5.6	224	3.4



Downtown

South of 14th Street

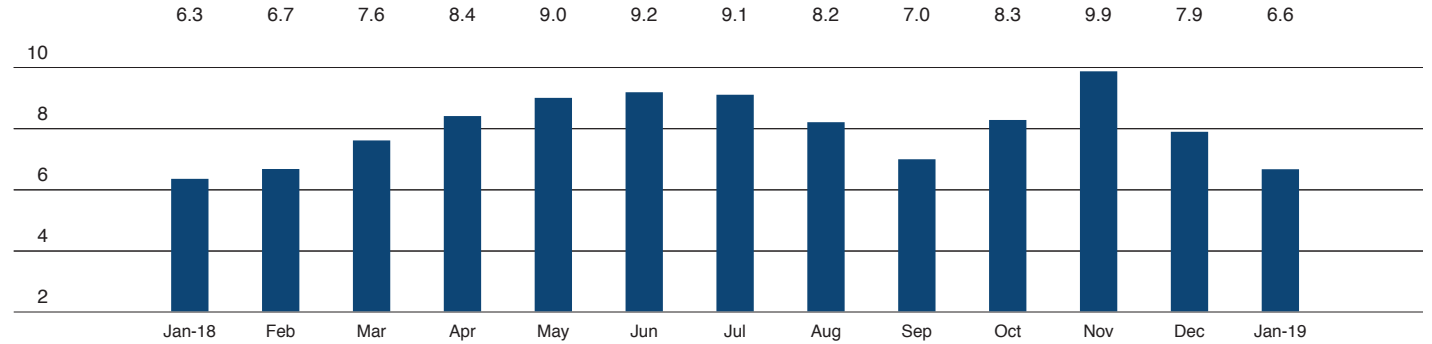


Halstead.com WEB# 19102967



Halstead.com WEB# 19010189

Absorption Rate in Months: All Apartments



Condominiums

	JANUARY 2019		DECEMBER 2018		JANUARY 2018	
	LISTINGS	ABSORPTION RATE	LISTINGS	ABSORPTION RATE	LISTINGS	ABSORPTION RATE
Studio	69	6.0	80	6.9	71	6.3
1-Bedroom	235	7.9	264	9.2	215	6.9
2-Bedroom	247	8.6	269	8.5	246	8.6
3+Bedroom	254	8.9	307	11.3	274	11.6
Loft	99	9.4	130	11.8	149	8.9
All	904	8.3	1,050	9.5	955	8.6

Cooperatives

	JANUARY 2019		DECEMBER 2018		JANUARY 2018	
	LISTINGS	ABSORPTION RATE	LISTINGS	ABSORPTION RATE	LISTINGS	ABSORPTION RATE
Studio	42	3.2	53	3.8	39	3.0
1-Bedroom	137	3.4	175	4.8	84	2.5
2-Bedroom	89	4.8	110	5.3	72	3.2
3+Bedroom	51	8.1	64	12.0	40	6.3
Loft	92	8.2	108	9.7	100	5.3
All	411	4.6	510	5.8	335	3.5



Upper Manhattan

Generally north of 96th Street on the East Side, and 110th Street on the West Side

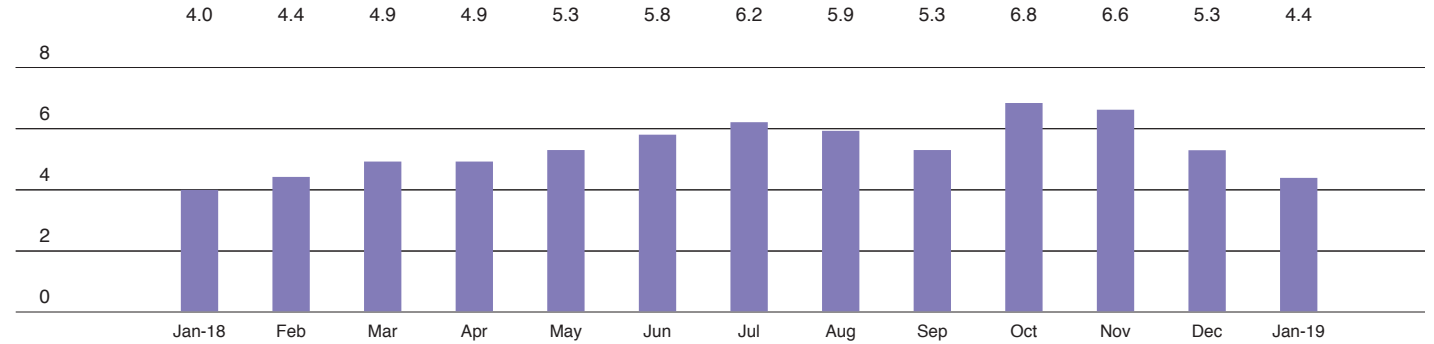


Halstead.com WEB# 19340012



Halstead.com WEB# 18878701

Absorption Rate in Months: All Apartments



Condominiums

	JANUARY 2019		DECEMBER 2018		JANUARY 2018	
	LISTINGS	ABSORPTION RATE	LISTINGS	ABSORPTION RATE	LISTINGS	ABSORPTION RATE
Studio	7	2.3	6	2.0	13	2.5
1-Bedroom	49	3.5	49	3.9	57	4.4
2-Bedroom	68	5.1	83	6.0	68	5.2
3+Bedroom	43	8.1	56	12.0	42	6.0
All	167	4.7	194	5.7	180	4.7

Cooperatives

	JANUARY 2019		DECEMBER 2018		JANUARY 2018	
	LISTINGS	ABSORPTION RATE	LISTINGS	ABSORPTION RATE	LISTINGS	ABSORPTION RATE
Studio	7	4.7	6	3.6	10	3.0
1-Bedroom	58	4.6	71	6.8	38	2.8
2-Bedroom	57	3.5	67	4.1	58	2.9
3+Bedroom	26	4.2	29	4.5	39	7.5
All	148	4.1	173	4.9	145	3.4



HALSTEAD

REAL ESTATE

OFFICES

MANHATTAN PARK AVENUE

499 Park Avenue
New York, NY 10022
212.734.0010

EAST SIDE

770 Lexington Avenue
New York, NY 10065
212.317.7800

WEST SIDE

408 Columbus Avenue
New York, NY 10024
212.769.3000

VILLAGE

831 Broadway
New York, NY 10003
212.381.6500

SOHO

451 West Broadway
New York, NY 10012
212.381.4200

HARLEM

2169 Frederick Douglass Boulevard
New York, NY 10026
212.381.2570

WASHINGTON HEIGHTS

819 West 187th Street
New York, NY 10033
212.381.2452

BRONX RIVERDALE JOHNSON

3531 Johnson Avenue
Riverdale, NY 10463
718.878.1700

RIVERDALE MOSHOLU

5626 Mosholu Avenue
Riverdale, NY 10471
718.549.4116

BROOKLYN BROOKLYN HEIGHTS

122 Montague Street
Brooklyn, NY 11201
718.613.2000

NORTH SLOPE

76 Seventh Avenue
Brooklyn, NY 11217
718.399.2222

PARK SLOPE

160 7th Avenue
Brooklyn, NY 11215
718.878.1960

COBBLE HILL

162 Court Street
Brooklyn, NY 11201
718.613.2020

BEDFORD STUYVESANT

1191 Bedford Avenue,
Brooklyn, NY 11216
718.878.1750

STUYVESANT HEIGHTS

316 Stuyvesant Avenue,
Brooklyn, NY 11233
718.613.2800

SOUTH SLOPE

1214 8th Avenue
Brooklyn, NY 11215
718.878.1888

FORT GREENE

725 Fulton Street
Brooklyn, NY 11217
718.613.2800

HUDSON VALLEY HUDSON

526 Warren Street
Hudson, NY 12534
518.828.0181

CONNECTICUT DARIEN

671 Boston Post Road
Darien, CT 06820
203.655.1418

NEW CANAAN - ELM STREET

183 Elm Street
New Canaan, CT 06840
203.966.7800

NEW CANAAN - SOUTH AVENUE

6 South Avenue
New Canaan, CT 06840
203.966.7772

ROWAYTON

140 Rowayton Avenue
Rowayton, CT 06853
203.655.1418

GREENWICH

125 Mason Street
Greenwich, CT 06830
203.869.8100

STAMFORD

1099 High Ridge Road
Stamford, CT 06905
203.329.8801

WESTPORT

379 Post Road East
Westport, CT 06880
203.221.0666

WILTON

21 River Road
Wilton, CT 06897
203.762.8118

QUEENS LONG ISLAND CITY

47-12 Vernon Boulevard
Queens, NY 11101
718.878.1800

FOREST HILLS

108-23 Ascan Avenue
Forest Hills, NY 11375
718.520.0303

NEW JERSEY HOBOKEN

200 Washington Street
Hoboken, NJ 07030
201.478.6700

MONTCLAIR

635 Valley Road,
Montclair, NJ 07030
973.744.6033

HAMPTONS EAST HAMPTON

2 Newtown Lane
East Hampton, NY 11937
631.324.6100

SOUTHAMPTON

31 Main Street
Southampton, NY 11968
631.283.2883

CORPORATE COMMERCIAL SALES

770 Lexington Avenue
New York, NY 10065
212.381.3208

DEVELOPMENT MARKETING

445 Park Avenue
New York, NY 10022
212.521.5703

GLOBAL SERVICES

770 Lexington Avenue
New York, NY 10065
212.381.6521

MANAGEMENT COMPANY

770 Lexington Avenue, 7th floor
New York, NY, 10065
212.508.7272

Prepared by Lisa Rae Castrigno,
SVP of Research.

©2019 by Halstead Manhattan, LLC. All Rights Reserved. This information may not be copied, commercially used or distributed without Halstead's prior consent. While information is believed true, no guaranty is made of accuracy.



Visit [halstead.com](https://www.halstead.com) for access to all of our reports, listings, neighborhood information and more.