



# HALSTEAD REAL ESTATE

Connecticut | New York City | Hamptons | New Jersey | Hudson Valley

## Fairfield Market Report

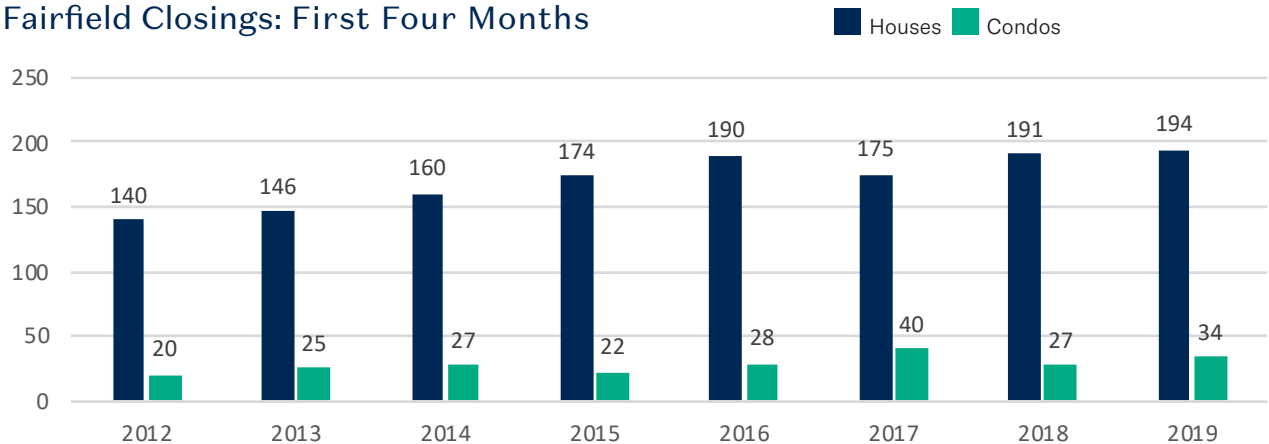
Year To Date Through April 30, 2019

379 POST ROAD EAST, WESTPORT, CT 06880 | (203) 221-0666

HALSTEAD CONNECTICUT, LLC

	2019	2018	% CHANGE
Houses: Closings in April	49	60	-18.3%
Houses: Closings First Four Months	194	191	+1.6%
Houses: Average Closing Price First Four Months	\$727,137	\$757,109	-4%
Houses: Active Inventory on April 30th	561	534	+5.1%
Condos: Closings First Four Months	34	27	+25.9%
Condos: Average Closing Price First Four Months	\$391,424	\$449,963	-13%
Condos: Active Inventory on April 30th	64	60	+6.7%
House & Condo \$ Volume of Closings First Four Months	\$154,373,032	\$156,756,908	-1.5%

### Fairfield Closings: First Four Months





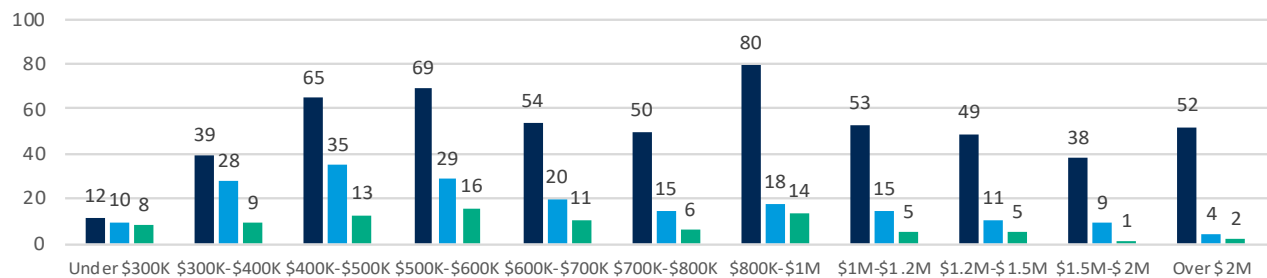
## Number of Houses Closed: First Four Months

	2019	2018	%
Under \$300K	10	13	-23.1%
\$300K-\$400K	28	36	-22.2%
\$400K-\$500K	35	33	+6.1%
\$500K-\$600K	29	21	+38.1%
\$600K-\$700K	20	17	+17.6%
\$700K-\$800K	15	17	-11.8%
\$800K-\$1M	18	12	+50%
\$1M-\$1.2M	15	15	0%
\$1.2M-\$1.5M	11	12	-8.3%
\$1.5M-\$2M	9	5	+80%
Over \$2M	4	10	-60%

## Houses Active/Closed/Pending 2019

Active/Pending as of April 30th; Closed: First Four Months

Active Closed Pending



## Town Comparison: Sold Houses - First Four Months

Town	# of Closed Houses		% change	Average Closing Price		% change
	2019	2018		2019	2018	
Darien	65	65	0%	\$1,506,419	\$1,573,524	-4.3%
Easton	34	33	+3%	\$577,608	\$569,203	+1.5%
Fairfield	194	191	+1.6%	\$727,137	\$757,109	-4%
All of Greenwich	107	153	-30.1%	\$2,534,522	\$2,502,622	+1.3%
New Canaan	57	44	+29.5%	\$1,357,733	\$1,799,849	-24.6%
Norwalk	141	162	-13%	\$559,862	\$562,298	-0.4%
Redding	28	31	-9.7%	\$491,579	\$523,140	-6%
Ridgefield	75	76	-1.3%	\$715,517	\$662,425	+8%
Rowayton*	16	14	+14.3%	\$1,108,906	\$1,100,720	+0.7%
Stamford	170	200	-15%	\$586,374	\$648,166	-9.5%
Weston	37	39	-5.1%	\$701,958	\$745,401	-5.8%
Westport	81	122	-33.6%	\$1,334,725	\$1,569,667	-15%
Wilton	56	50	+12%	\$752,625	\$832,096	-9.6%

\*Rowayton closed data also included in Norwalk.