



MAY 2014 HIGHLIGHTS

- Manhattan had a 4.5-month supply of apartments for sale at the beginning of May, up from 4.0 months in April, but 15% lower than a year ago.
- The absorption rate was 5.0 months for condominiums, and 4.2 months for cooperatives.
- Upper Manhattan continued to have the lowest absorption rate in the borough, at just 3.5 months.

DEFINITIONS

LISTINGS:

Number of active listings transmitted through the Real Estate Board of New York's listing service at the beginning of the month.

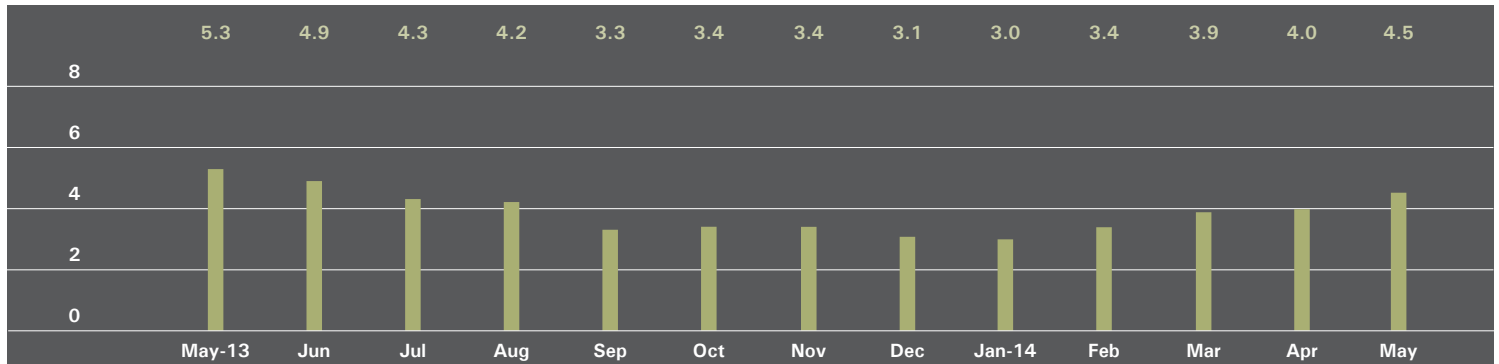
ABSORPTION RATE:

How many months it would take to sell all active listings in a given market. We calculate it by dividing the number of listings by the average number of closings over the prior 6 months.

Historically, an absorption rate between 6-9 months indicates a balanced market.

MANHATTAN

ABSORPTION RATE IN MONTHS: ALL APARTMENTS



ALL APARTMENTS

	MAY 2014		APRIL 2014		MAY 2013	
	Listings	Absorption Rate	Listings	Absorption Rate	Listings	Absorption Rate
Studio	640	4.0	586	3.6	734	5.3
1-Bedroom	1,340	3.6	1,258	3.3	1,698	4.7
2-Bedroom	1,260	4.4	1,115	3.9	1,331	4.7
3+Bedroom	1,128	7.7	1,089	7.2	1,110	8.2
Loft	363	4.1	307	3.3	429	5.4
All	4,731	4.5	4,355	4.0	5,302	5.3

CONDOMINIUMS

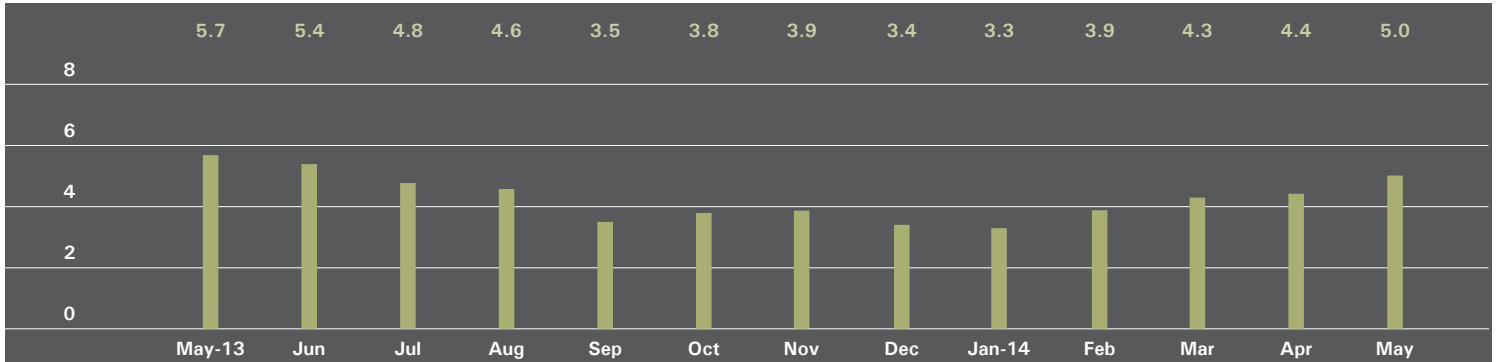
	MAY 2014		APRIL 2014		MAY 2013	
	Listings	Absorption Rate	Listings	Absorption Rate	Listings	Absorption Rate
Studio	188	3.5	175	3.3	245	5.5
1 Bedroom	583	4.0	533	3.5	664	4.5
2 Bedroom	669	4.9	581	4.3	621	4.9
3+ Bedroom	680	7.8	662	7.7	558	8.1
Loft	198	4.7	161	3.7	214	5.0
All	2,318	5.0	2,112	4.5	2,302	5.4

COOPERATIVES

	MAY 2014		APRIL 2014		MAY 2013	
	Listings	Absorption Rate	Listings	Absorption Rate	Listings	Absorption Rate
Studio	452	4.3	411	3.8	489	5.1
1 Bedroom	757	3.4	725	3.1	1,034	4.8
2 Bedroom	591	4.0	534	3.5	710	4.5
3+ Bedroom	448	7.4	427	6.6	552	8.3
Loft	165	3.7	146	3.0	215	5.7
All	2,413	4.2	2,243	3.7	3,000	5.2

EAST SIDE

ABSORPTION RATE IN MONTHS: ALL APARTMENTS



ALL APARTMENTS

	MAY 2014		APRIL 2014		MAY 2013	
	Listings	Absorption Rate	Listings	Absorption Rate	Listings	Absorption Rate
Studio	149	5.4	146	4.8	164	5.9
1 Bedroom	280	3.6	286	3.4	412	5.0
2 Bedroom	326	4.5	277	3.7	345	4.6
3+ Bedroom	394	7.7	387	6.8	423	8.7
All	1,149	5.0	1,096	4.4	1,344	5.7

CONDOMINIUMS

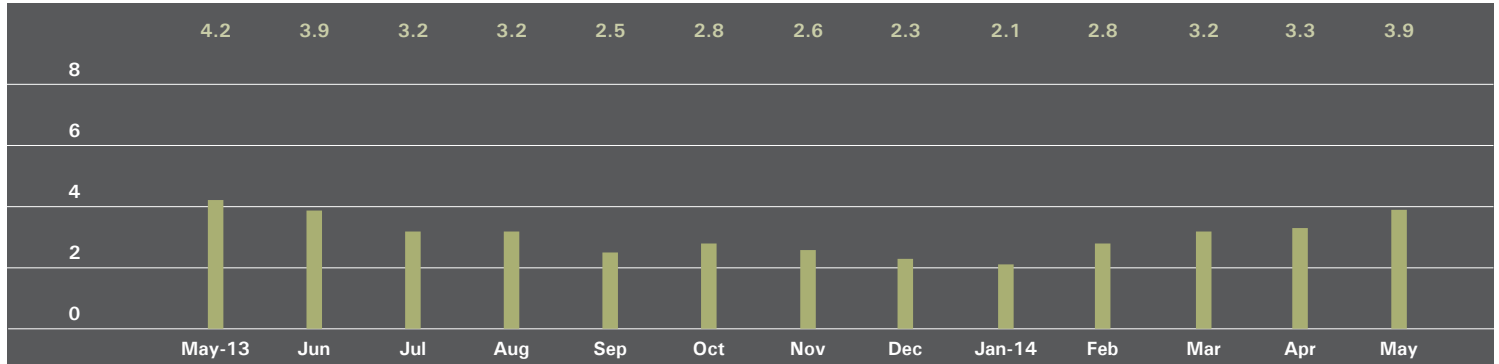
	MAY 2014		APRIL 2014		MAY 2013	
	Listings	Absorption Rate	Listings	Absorption Rate	Listings	Absorption Rate
Studio	22	6.0	17	3.3	32	4.9
1 Bedroom	67	3.5	70	3.3	90	3.9
2 Bedroom	119	5.4	96	4.6	77	4.2
3+ Bedroom	156	5.7	164	5.6	139	8.7
All	364	5.0	347	4.5	338	5.3

COOPERATIVES

	MAY 2014		APRIL 2014		MAY 2013	
	Listings	Absorption Rate	Listings	Absorption Rate	Listings	Absorption Rate
Studio	127	5.3	129	5.1	132	6.2
1 Bedroom	213	3.6	216	3.4	322	5.4
2 Bedroom	207	4.1	181	3.4	268	4.7
3+ Bedroom	238	9.8	223	8.1	284	8.7
All	785	4.9	749	4.4	1,006	5.9

WEST SIDE

ABSORPTION RATE IN MONTHS: ALL APARTMENTS



ALL APARTMENTS

	MAY 2014		APRIL 2014		MAY 2013	
	Listings	Absorption Rate	Listings	Absorption Rate	Listings	Absorption Rate
Studio	93	3.8	91	3.6	77	2.9
1 Bedroom	212	3.0	187	2.5	285	4.8
2 Bedroom	206	3.5	173	2.7	215	3.5
3+ Bedroom	224	6.4	209	6.0	183	5.7
All	735	3.9	660	3.3	760	4.2

CONDOMINIUMS

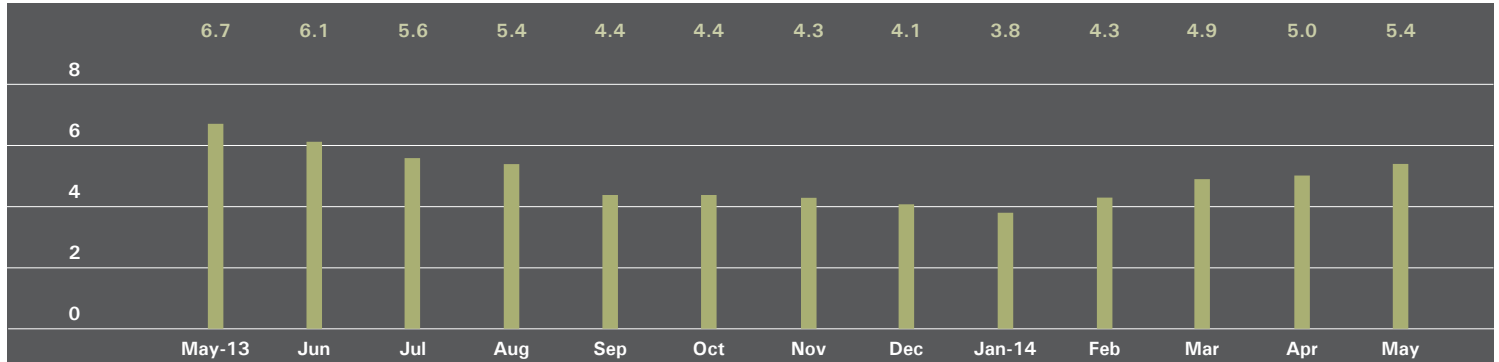
	MAY 2014		APRIL 2014		MAY 2013	
	Listings	Absorption Rate	Listings	Absorption Rate	Listings	Absorption Rate
Studio	26	4.1	23	3.6	24	3.1
1 Bedroom	77	3.0	65	2.4	107	4.7
2 Bedroom	92	3.8	78	3.0	84	3.8
3+ Bedroom	130	6.3	122	6.5	91	5.7
All	325	4.2	288	3.7	306	4.5

COOPERATIVES

	MAY 2014		APRIL 2014		MAY 2013	
	Listings	Absorption Rate	Listings	Absorption Rate	Listings	Absorption Rate
Studio	67	3.7	68	3.6	53	2.9
1 Bedroom	135	3.0	122	2.6	178	4.8
2 Bedroom	114	3.3	95	2.5	131	3.3
3+ Bedroom	94	6.6	87	5.3	92	5.6
All	410	3.6	372	3.1	454	4.1

MIDTOWN EAST

ABSORPTION RATE IN MONTHS: ALL APARTMENTS



ALL APARTMENTS

	MAY 2014		APRIL 2014		MAY 2013	
	Listings	Absorption Rate	Listings	Absorption Rate	Listings	Absorption Rate
Studio	131	4.3	122	4.0	140	6.2
1 Bedroom	253	4.4	231	4.0	316	5.9
2 Bedroom	192	5.5	174	5.1	220	6.2
3+ Bedroom	138	14.0	128	14.5	145	14.0
All	714	5.4	655	5.0	821	6.7

CONDOMINIUMS

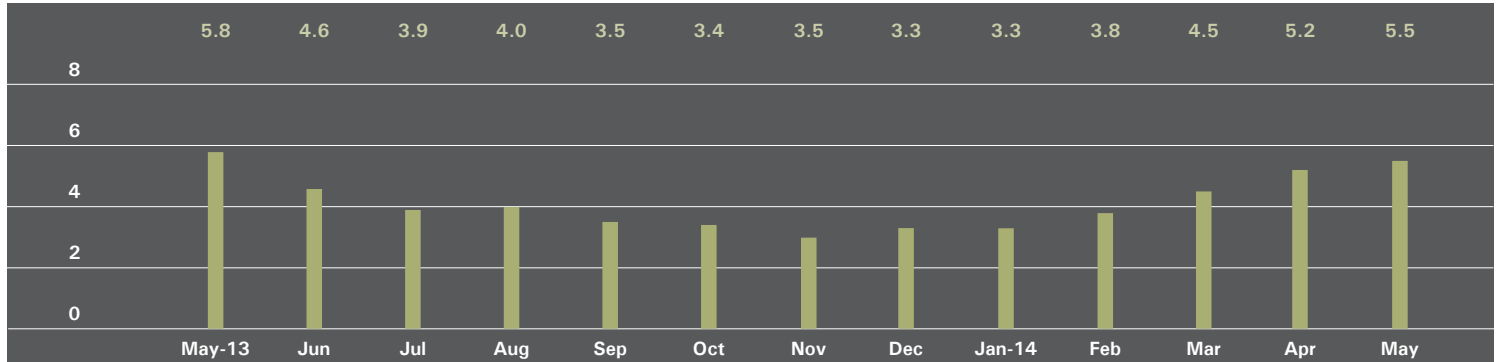
	MAY 2014		APRIL 2014		MAY 2013	
	Listings	Absorption Rate	Listings	Absorption Rate	Listings	Absorption Rate
Studio	27	3.5	27	3.5	29	7.3
1 Bedroom	93	5.3	79	5.1	96	4.8
2 Bedroom	92	6.2	74	5.0	94	6.4
3+ Bedroom	82	20.5	75	25.0	69	13.4
All	294	6.7	255	6.2	288	6.6

COOPERATIVES

	MAY 2014		APRIL 2014		MAY 2013	
	Listings	Absorption Rate	Listings	Absorption Rate	Listings	Absorption Rate
Studio	104	4.6	95	4.2	111	5.9
1 Bedroom	160	4.0	152	3.6	220	6.5
2 Bedroom	100	5.0	100	5.1	126	6.0
3+ Bedroom	56	9.6	53	9.1	76	14.7
All	420	4.8	400	4.4	533	6.8

MIDTOWN WEST

ABSORPTION RATE IN MONTHS: ALL APARTMENTS



ALL APARTMENTS

	MAY 2014		APRIL 2014		MAY 2013	
	Listings	Absorption Rate	Listings	Absorption Rate	Listings	Absorption Rate
Studio	40	2.4	39	2.5	56	4.0
1 Bedroom	134	5.5	130	4.8	150	4.9
2 Bedroom	96	5.7	81	4.9	120	6.8
3+ Bedroom	69	19.7	74	22.2	72	12.0
All	339	5.5	324	5.2	398	5.8

CONDOMINIUMS

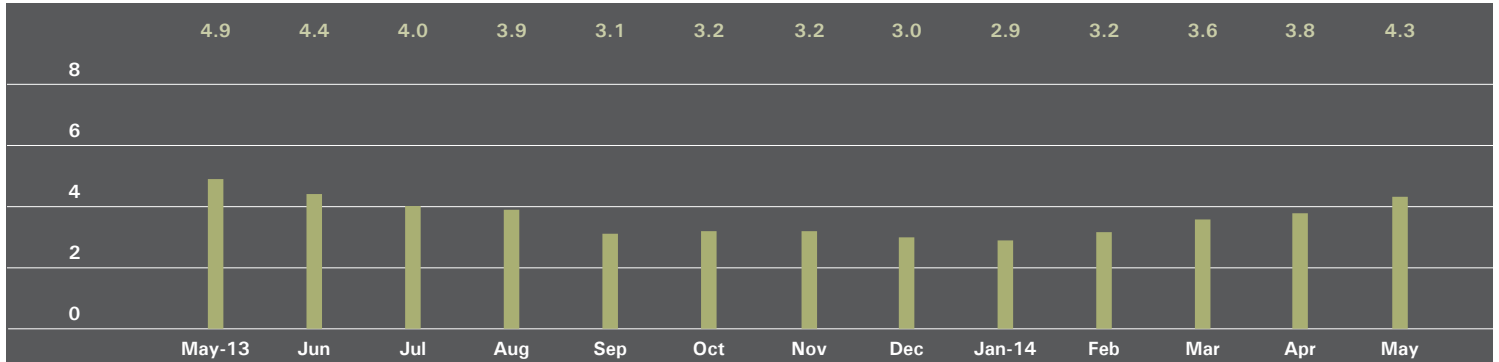
	MAY 2014		APRIL 2014		MAY 2013	
	Listings	Absorption Rate	Listings	Absorption Rate	Listings	Absorption Rate
Studio	20	1.8	26	2.6	32	4.2
1 Bedroom	96	5.8	95	4.9	106	5.0
2 Bedroom	77	5.7	65	5.2	86	6.2
3+ Bedroom	58	24.9	60	25.7	54	10.1
All	251	5.8	246	5.6	278	5.8

COOPERATIVES

	MAY 2014		APRIL 2014		MAY 2013	
	Listings	Absorption Rate	Listings	Absorption Rate	Listings	Absorption Rate
Studio	20	3.4	13	2.4	24	3.8
1 Bedroom	38	4.8	35	4.8	44	4.6
2 Bedroom	19	5.7	16	3.8	34	8.9
3+ Bedroom	11	9.4	14	14.0	18	27.0
All	88	4.8	78	4.3	120	5.9

DOWNTOWN

ABSORPTION RATE IN MONTHS: ALL APARTMENTS



ALL APARTMENTS

	MAY 2014		APRIL 2014		MAY 2013	
	Listings	Absorption Rate	Listings	Absorption Rate	Listings	Absorption Rate
Studio	209	3.9	172	3.1	272	6.0
1 Bedroom	383	3.4	351	3.1	423	3.7
2 Bedroom	321	4.7	301	4.4	314	4.4
3+ Bedroom	258	7.8	242	7.3	231	9.0
Loft	312	4.2	257	3.2	360	5.1
All	1,483	4.3	1,323	3.8	1,600	4.9

CONDOMINIUMS

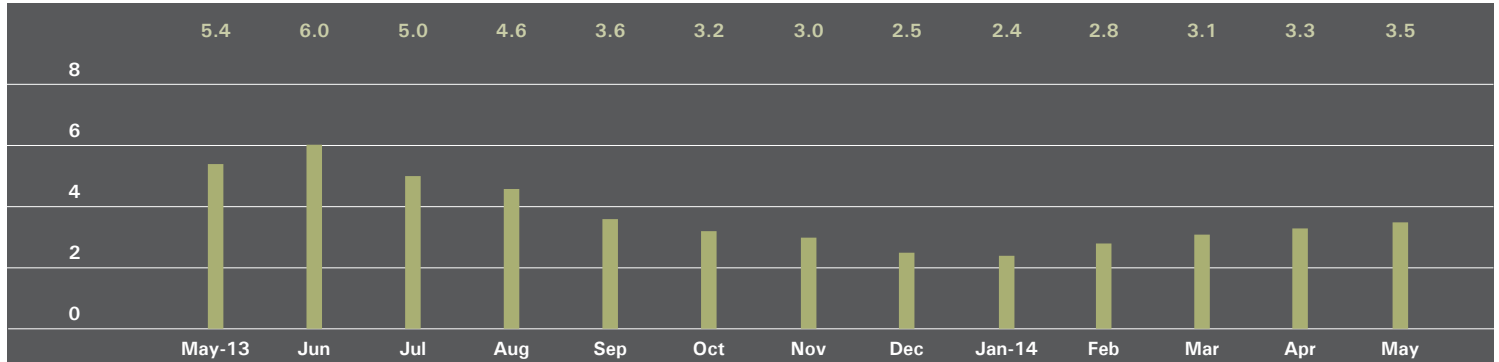
	MAY 2014		APRIL 2014		MAY 2013	
	Listings	Absorption Rate	Listings	Absorption Rate	Listings	Absorption Rate
Studio	89	4.2	78	3.8	115	6.7
1 Bedroom	208	3.7	191	3.4	234	4.6
2 Bedroom	223	4.8	207	4.5	222	4.7
3+ Bedroom	226	8.9	209	7.8	179	9.3
Loft	186	4.8	148	3.7	196	4.8
All	932	5.0	833	4.4	946	5.4

COOPERATIVES

	MAY 2014		APRIL 2014		MAY 2013	
	Listings	Absorption Rate	Listings	Absorption Rate	Listings	Absorption Rate
Studio	120	3.7	94	2.7	157	5.5
1 Bedroom	175	3.1	160	2.8	189	2.9
2 Bedroom	98	4.4	94	4.2	92	3.8
3+ Bedroom	32	4.3	33	5.1	52	8.0
Loft	126	3.5	109	2.7	164	5.6
All	551	3.5	490	3.0	654	4.3

UPPER MANHATTAN

ABSORPTION RATE IN MONTHS: ALL APARTMENTS



ALL APARTMENTS

	MAY 2014		APRIL 2014		MAY 2013	
	Listings	Absorption Rate	Listings	Absorption Rate	Listings	Absorption Rate
Studio	27	3.0	24	2.6	37	8.5
1 Bedroom	95	3.2	91	2.7	137	5.1
2 Bedroom	130	3.8	121	3.7	137	5.3
3+ Bedroom	59	3.8	61	3.9	68	5.2
All	311	3.5	297	3.3	379	5.4

CONDOMINIUMS

	MAY 2014		APRIL 2014		MAY 2013	
	Listings	Absorption Rate	Listings	Absorption Rate	Listings	Absorption Rate
Studio	5	1.2	6	1.3	16	16.0
1 Bedroom	44	3.4	36	2.6	38	4.1
2 Bedroom	66	3.8	63	4.0	63	4.8
3+ Bedroom	37	4.7	38	5.6	29	3.9
All	152	3.6	143	3.5	146	4.8

COOPERATIVES

	MAY 2014		APRIL 2014		MAY 2013	
	Listings	Absorption Rate	Listings	Absorption Rate	Listings	Absorption Rate
Studio	22	4.6	18	3.9	21	6.3
1 Bedroom	51	3.0	55	2.8	99	5.6
2 Bedroom	64	3.7	58	3.3	74	5.8
3+ Bedroom	22	2.9	23	2.7	39	7.1
All	159	3.4	154	3.0	233	5.9

OFFICES

MANHATTAN

PARK AVENUE
499 Park Avenue
New York, NY 10022
212.734.0010

EAST SIDE
770 Lexington Avenue
New York, NY 10065
212.317.7800

WEST SIDE
408 Columbus Avenue
New York, NY 10024
212.769.3000

VILLAGE
831 Broadway
New York, NY 10003
212.253.9300

SOHO
451 West Broadway
New York, NY 10012
212.253.9300

HARLEM
2169 Frederick Douglass Boulevard
New York, NY 10026
212.381.2570

WASHINGTON HEIGHTS
819 West 187th Street
New York, NY 10033
212.928.3805

RIVERDALE

RIVERDALE
3531 Johnson Avenue
Riverdale, NY 10463
718.878.1700

RIVERDALE MOSHOLU
5626 Mosholu Avenue
Riverdale, NY 10471
718.549.4116

HAMPTONS

EAST HAMPTON
2 Newtown Lane
East Hampton, NY 11937
631.324.6100

SOUTHAMPTON
31 Main Street
Southampton, NY 11968
631.283.2883

BROOKLYN

BROOKLYN HEIGHTS
150 Montague Street
Brooklyn, NY 11201
718.613.2000

BOERUM HILL
495 Atlantic Avenue
Brooklyn, NY 11217
718.613.2090

PARK SLOPE
76 Seventh Avenue
Brooklyn, NY 11217
718.399.2222

PARK SLOPE
244 Fifth Avenue
Brooklyn, NY 11215
718.622.9300

COBBLE HILL
162 Court Street
Brooklyn, NY 11201
718.613.2020

BEDFORD STUYVESANT
316 Stuyvesant Avenue
Brooklyn, NY 11233
718.613.2800

HUDSON VALLEY

HUDSON VALLEY
526 Warren Street
Hudson, NY 12534
518.828.0181

NEW JERSEY

METRO NEW JERSEY
200 Washington Street
Hoboken, NJ 07030
201.478.6700

CONNECTICUT

DARIEN
671 Boston Post Road
Darien, CT 06820
203.655.1418

NEW CANAAN
183 Elm Street
New Canaan, CT 06840
203.966.7800

ROWAYTON
140 Rowayton Avenue
Rowayton, CT 06853
203.655.1418

GREENWICH
56 Mason Street
Greenwich, CT 06830
203.869.8100

GREENWICH
75 Holly Hill Lane
Greenwich, CT 06830
203.869.8100

STAMFORD
1099 High Ridge Road
Stamford, CT 06905
203.329.8801

WESTPORT
379 Post Road East
Westport, CT 06880
203.221.0666

WILTON
21 River Road
Wilton, CT 06897
203.762.8118

CORPORATE

COMMERCIAL SALES
770 Lexington Avenue
New York, NY 10065
212.381.3208

DEVELOPMENT MARKETING

831 Broadway
New York, NY 10003
212.253.9300

GLOBAL SERVICES
770 Lexington Avenue
New York, NY 10065
800.765.2692 x6521

Prepared by Gregory Heym, Chief Economist, Halstead Property, LLC.

Visit halstead.com for access to all of our reports, listings, neighborhood information and more.

©2014 by Halstead Property, LLC. All Rights Reserved. This information may not be copied, commercially used or distributed without Halstead Property's prior consent. While information is believed true, no guaranty is made of accuracy.