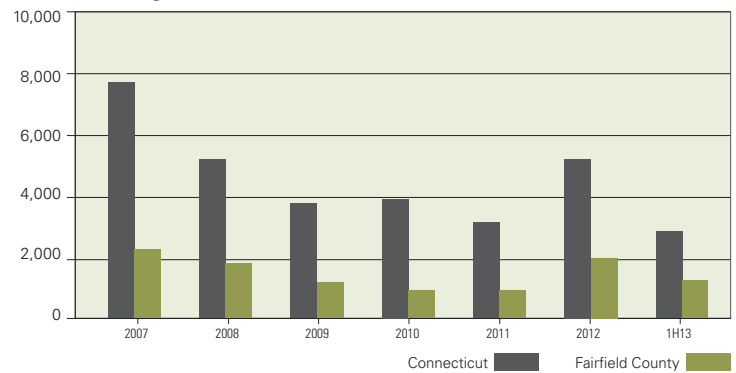


Permit Activity Picks Up

- Through the first 6 months of 2013, permits were issued for 1,257 new residential units in Fairfield County, a 58% increase from the same period a year ago.
- State-wide, permits through June were up 28% from 2012's comparable period.

Building Permits (number of units)

Source: Census Bureau



Local Employment Rises 1.6%

- Payrolls in the Bridgeport-Stamford labor market area rose by 6,400 from June 2012 to June 2013, a 1.6% increase.
- Gains were led by the professional and business services (+3,000), education and healthcare (+2,600) and leisure and hospitality (+2,600) sectors.
- Trade, transportation and utilities (-1,600) and financial activities (-1,200) shed the most jobs over the past 12 months.

Bridgeport-Stamford LMA* Employment

Source: CT Dept of Labor

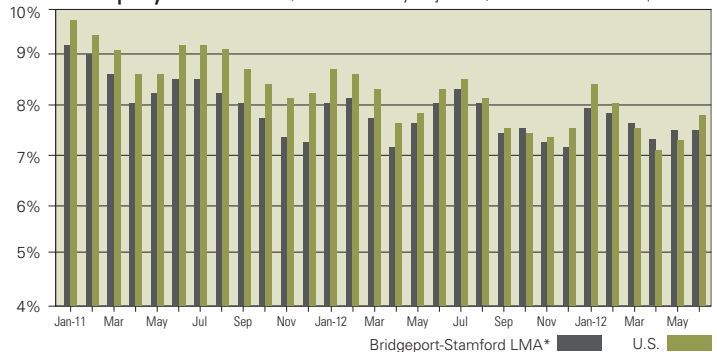
INDUSTRY	JUN-13	JUN-12	NET CHANGE	PERCENT CHANGE
Professional and Business Services	72,400	69,400	3,000	4.3%
Education and Health Services	71,000	68,400	2,600	3.8%
Leisure and Hospitality	43,100	40,500	2,600	6.4%
State & Local Government	44,200	42,600	1,600	3.8%
Construction	12,400	12,100	300	2.5%
Information	11,000	11,000	0	0.0%
Federal Government	2,600	2,600	0	0.0%
Other Services	17,000	17,200	-200	-1.2%
Manufacturing	33,700	34,400	-700	-2.0%
Financial Activities	40,300	41,500	-1,200	-2.9%
Trade, Transportation, and Utilities	71,100	72,700	-1,600	-2.2%
Total	418,800	412,400	6,400	1.6%

Bridgeport-Stamford Unemployment Rate Flat in June

- The unemployment was 7.5% in the Bridgeport-Stamford LMA in June, unchanged from the prior month, but down from 8.1% a year ago.
- The local rate was lower than the national rate, which rose in June to 7.8%.

Unemployment Rate (not seasonally adjusted)

Source: Connecticut Dept of Labor



* Includes the following towns: Ansonia, Bridgeport, Darien, Derby, Easton, Fairfield, Greenwich, Milford, Monroe, New Canaan, Newtown, Norwalk, Oxford, Redding, Ridgefield, Seymour, Shelton, Southbury, Stamford, Stratford, Trumbull, Weston, Westport, Wilton, Woodbridge.

Visit terraeconomics.com for the latest economic headlines.

©2013 by Halstead Property, LLC. All Rights Reserved. This information may not be copied, commercially used or distributed without Halstead Property's prior consent. While information is believed true, no guaranty is made of accuracy. Data is subject to revision.

