

Employments Rises 2.1% in Fairfield County Area

- There were 8,800 jobs added in the Bridgeport-Stamford Labor Market Area in the twelve months ending June, a 2.1% increase.
- Gains were led by professional and business services (+3,600), leisure and hospitality (+2,700) and trade, transportation and utilities (+1,600).
- The only sectors to lose jobs over the past year were financial activities (-1,000) and the federal government (-100).

Bridgeport-Stamford LMA* Employment

Source: CT Dept of Labor

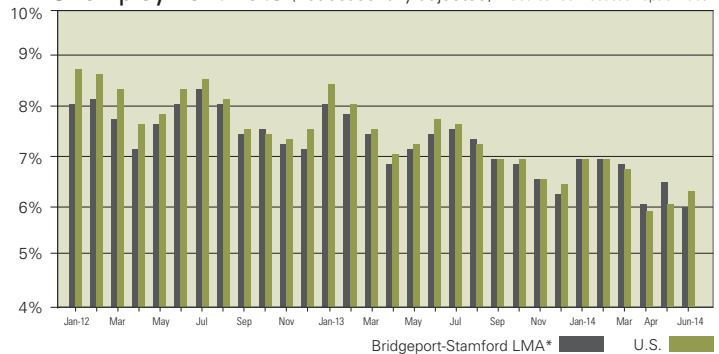
INDUSTRY	JUN-14	JUN-13	NET CHANGE	PERCENT CHANGE
Professional and Business Services	71,700	68,100	3,600	5.3%
Leisure and Hospitality	45,400	42,700	2,700	6.3%
Trade, Transportation, and Utilities	74,400	72,800	1,600	2.2%
Education and Health Services	70,900	70,200	700	1.0%
Other Services	17,800	17,200	600	3.5%
Manufacturing	34,500	34,100	400	1.2%
State & Local Government	44,100	43,900	200	0.5%
Information	12,100	12,000	100	0.8%
Construction	12,300	12,300	0	0.0%
Federal Government	2,500	2,600	-100	-3.8%
Financial Activities	41,300	42,300	-1,000	-2.4%
Total	427,000	418,200	8,800	2.1%

Local Unemployment Falls to Lowest Level Since December 2008

- The unemployment rate in the Bridgeport-Stamford LMA was 6.0% in June, down from 6.5% the previous month.
- This was the lowest rate since December of 2008, and is down 1.5% from a year ago.
- Unemployment across the U.S. was at 6.3% in June.

Unemployment Rate (not seasonally adjusted)

Source: Connecticut Dept of Labor

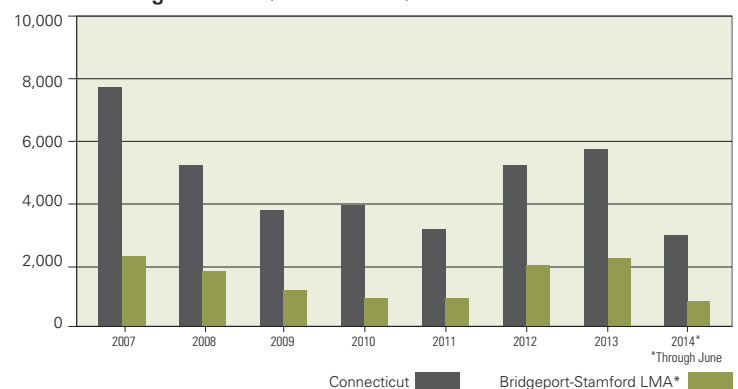


Permit Activity Rises Statewide

- Through the first six months of 2014, permits were filed for 3,049 new residential units in Connecticut.
- This was 6% higher than during the first half of 2013.
- In the Fairfield County area, permits are running 27% below last year level, with 916 units planned through June.

Building Permits (number of units)

Source: Census Bureau



* Includes the following towns: Ansonia, Bridgeport, Darien, Derby, Easton, Fairfield, Greenwich, Milford, Monroe, New Canaan, Newtown, Norwalk, Oxford, Redding, Ridgefield, Seymour, Shelton, Southbury, Stamford, Stratford, Trumbull, Weston, Westport, Wilton, Woodbridge.

Visit terraeconomics.com for the latest economic headlines.

©2014 by Halstead Property, LLC. All Rights Reserved. This information may not be copied, commercially used or distributed without Halstead Property's prior consent. While information is believed true, no guaranty is made of accuracy. Data is subject to revision.

