



HALSTEAD

REAL ESTATE

Connecticut | New York City | Hamptons | New Jersey | Hudson Valley

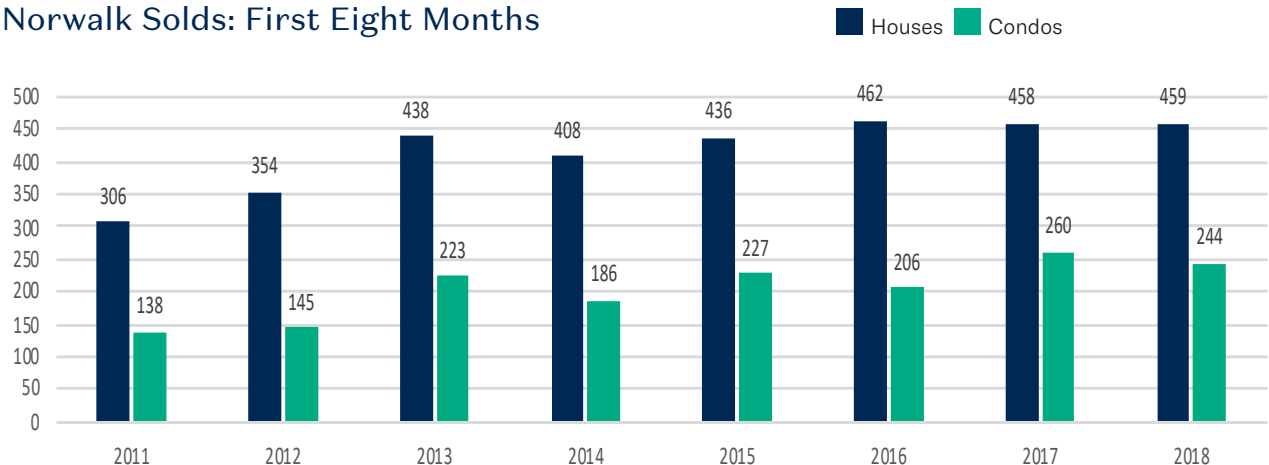
Norwalk Market Report

Year To Date Through August 31, 2018

671 BOSTON POST ROAD, DARIEN, CT 06820 | (203) 655-1418
 140 ROWAYTON AVENUE, ROWAYTON, CT 06853 | (203) 853-1419
 HALSTEAD CONNECTICUT, LLC

	2018	2017	% CHANGE
Houses: Closings in August	69	66	+4.5%
Houses: Closings First Eight Months	459	458	+0.2%
Houses: Median Closing Price First Eight Months	\$515,000	\$470,000	+9.6%
Houses: Average Closing Price First Eight Months	\$616,712	\$616,386	+0.1%
Houses: On Market Inventory on August 31st	341	328	+4%
Condos: Closings First Eight Months	244	260	-6.2%
Condos: Average Closing Price First Eight Months	\$284,017	\$302,144	-6%
Condos: On Market Inventory on August 31st	119	159	-25.2%
House & Condo \$ Volume of Closings First Eight Months	\$352,371,033	\$360,861,931	-2.4%

Norwalk Solds: First Eight Months





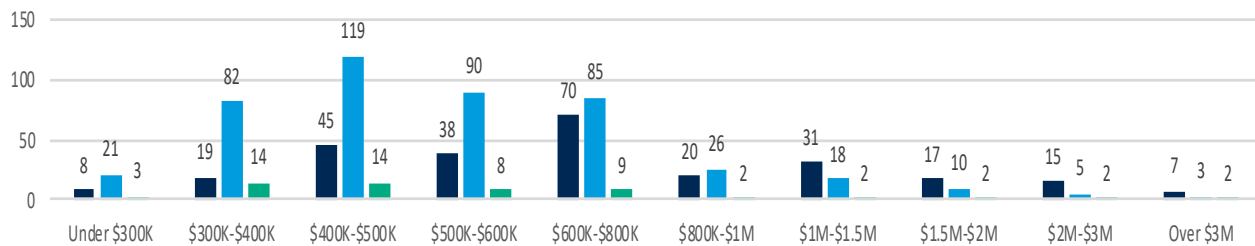
Number of Houses Closed: First Eight Months

	2018	2017	%
Under \$300K	21	48	-56.3%
\$300K-\$400K	82	100	-18%
\$400K-\$500K	119	108	+10.2%
\$500K-\$600K	90	77	+16.9%
\$600K-\$800K	85	63	+34.9%
\$800K-\$1M	26	21	+23.8%
\$1M-\$1.5M	18	14	+28.6%
\$1.5M-\$2M	10	15	-33.3%
\$2M-\$3M	5	6	-16.7%
Over \$3M	3	6	-50%

Houses Active/Closed/Pending 2018

Active/Pending as of August 31st; Closed: First Eight Months

Active Closed Pending



Town Comparison: First Eight Months (Single Family Homes)

Town	# of Closed Houses		% change	Median Closing Price		% change
	2018	2017		2018	2017	
Darien	191	225	-15.1%	\$1,440,000	\$1,400,000	+2.9%
Easton	96	75	+28%	\$558,500	\$615,000	-9.2%
Fairfield	529	544	-2.8%	\$638,000	\$606,000	+5.3%
Greenwich	412	400	+3%	\$1,850,000	\$1,797,500	+1.9%
New Canaan	155	174	-10.9%	\$1,380,000	\$1,445,000	-4.5%
Norwalk	459	458	+0.2%	\$515,000	\$470,000	+9.6%
Redding	89	100	-11%	\$556,000	\$497,500	+11.8%
Ridgefield	238	274	-13.1%	\$648,000	\$640,000	+1.3%
Rowayton*	52	58	-10.3%	\$885,750	\$1,310,375	-32.4%
Stamford	506	506	0%	\$590,000	\$600,000	-1.7%
Weston	113	118	-4.2%	\$690,000	\$792,750	-13%
Westport	303	306	-1%	\$1,247,500	\$1,340,500	-6.9%
Wilton	143	163	-12.3%	\$822,500	\$765,000	+7.5%

*Rowayton solds data also included in Norwalk.