



# HALSTEAD

REAL ESTATE

Connecticut | New York City | Hamptons | New Jersey | Hudson Valley

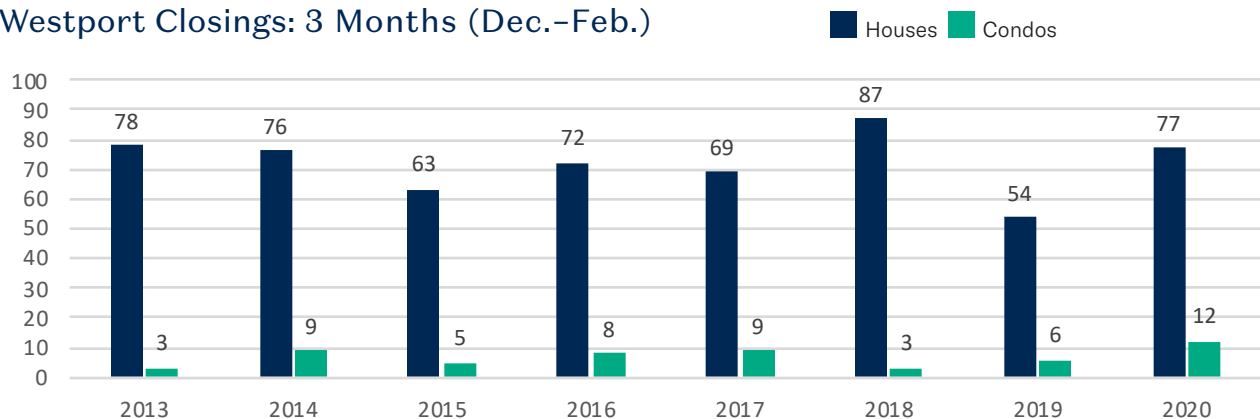
## Westport Market Report

### Year To Date Through February 29, 2020

379 POST ROAD EAST, WESTPORT, CT 06880 | (203) 221-0666  
HALSTEAD CONNECTICUT, LLC

	2020	2019	% CHANGE
Houses: Closings in February	24	14	+71.4%
Houses: Closings Dec.-Feb. (3 months)	77	54	+42.6%
Houses: Average Closing Price Dec.-Feb. (3 months)	\$1,377,341	\$1,191,190	+15.6%
Houses: Pending on February 29th	37	28	+32.1%
Houses: Active Inventory on February 29th	289	331	-12.7%
Condos: Closings Dec.-Feb. (3 months)	12	6	+100%
Condos: Average Closing Price Dec.-Feb. (3 months)	\$710,704	\$645,583	+10.1%
Condos: Active Inventory on February 29th	27	17	+58.8%
House & Condo \$ Volume of Closings Dec.-Feb. (3 months)	\$114,583,699	\$68,197,767	+68%

### Westport Closings: 3 Months (Dec.-Feb.)





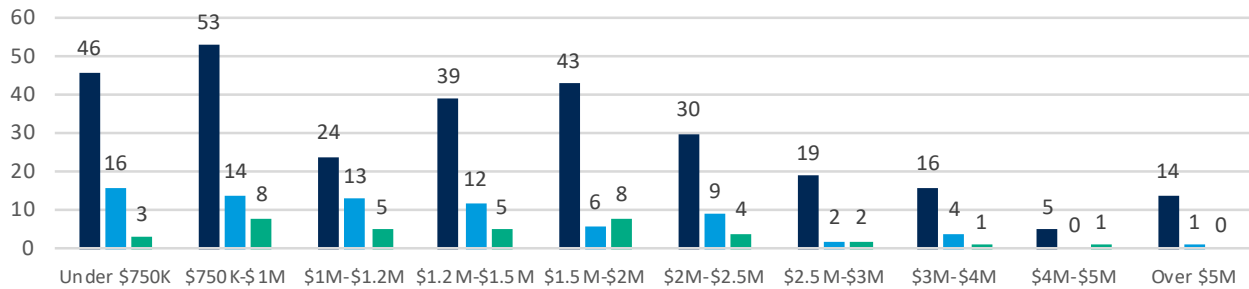
## Number of Houses Closed: 3 Months (Dec.-Feb.)

	2020	2019	%
Under \$750K	16	14	+14.3%
\$750K-\$1M	14	12	+16.7%
\$1M-\$1.2M	13	5	+160%
\$1.2M-\$1.5M	12	7	+71.4%
\$1.5M-\$2M	6	10	-40%
\$2M-\$2.5M	9	3	+200%
\$2.5M-\$3M	2	1	+100%
\$3M-\$4M	4	2	+100%
\$4M-\$5M	0	0	NA
Over \$5M	1	0	NA

## Houses Active/Closed/Pending 2020

Active/Pending as of February 29th; Closed: 3 Months (Dec.-Feb.)

Active Closed Pending



## Town Comparison: Sold Houses - 3 Months (Dec.-Feb.)

Town	# of Closed Houses		% change	Average Closing Price		% change
	2020	2019		2020	2019	
Darien	53	57	-7%	\$1,500,278	\$1,327,119	+13%
Easton	23	23	0%	\$579,117	\$669,785	-13.5%
Fairfield	116	130	-10.8%	\$830,646	\$751,512	+10.5%
All of Greenwich	106	98	+8.2%	\$2,299,308	\$2,526,763	-9%
New Canaan	41	46	-10.9%	\$1,591,153	\$1,342,314	+18.5%
Norwalk	154	118	+30.5%	\$580,539	\$560,748	+3.5%
Redding	29	19	+52.6%	\$554,174	\$508,016	+9.1%
Ridgefield	69	53	+30.2%	\$747,710	\$724,508	+3.2%
Rowayton*	22	9	+144.4%	\$936,391	\$973,167	-3.8%
Stamford	152	132	+15.2%	\$604,908	\$587,952	+2.9%
Weston	33	30	+10%	\$747,977	\$777,647	-3.8%
Westport	77	54	+42.6%	\$1,377,341	\$1,191,190	+15.6%
Wilton	52	42	+23.8%	\$712,929	\$735,595	-3.1%

\*Rowayton closed data also included in Norwalk.