



August 2015 Highlights

The absorption rate
for Manhattan

apartments fell to **4.0** months in August,
but remained slightly higher than a year ago.

At **5.3** months, the absorption rate for
condominiums remains significantly higher than
the 3.0 rate for co-ops. Most of this difference is
due to new developments, which are virtually all
condos.

With just a **2.9**-month supply of apartments
for sale, Upper Manhattan remained the tightest
market in Manhattan.



halstead.com WEB# 13034455



halstead.com WEB# 13163603

Definitions

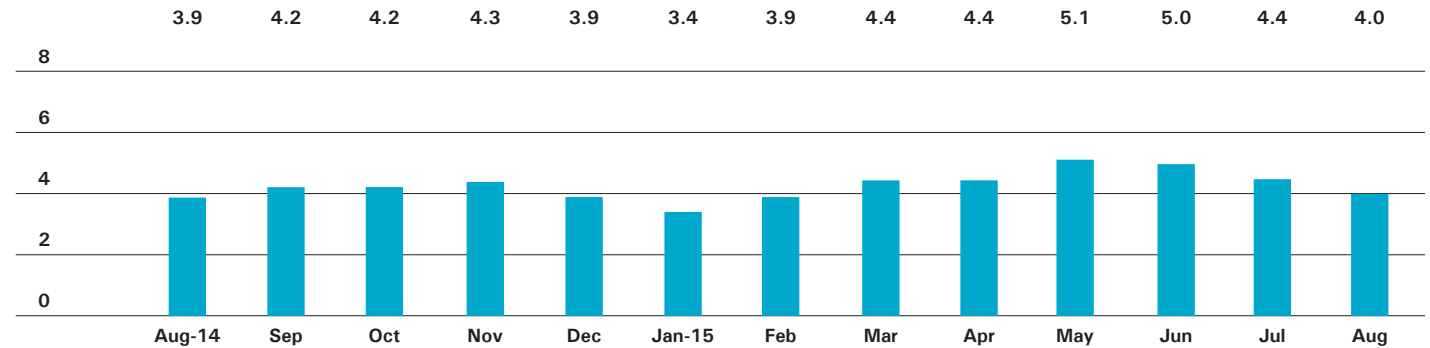
Listings: Number of active listings transmitted through the Real Estate Board of New York's listing service at the beginning of the month.

Absorption Rate: How many months it would take to sell all active listings in a given market. We calculate it by dividing the number of listings by the average number of closings over the prior 6 months. Historically, an absorption rate between 6-9 months indicates a balanced market.

Cover Property: halstead.com WEB# 12545233

Manhattan

ABSORPTION RATE IN MONTHS: ALL APARTMENTS



CONDOMINIUMS

	AUGUST 2015		JULY 2015		AUGUST 2014	
	LISTINGS	ABSORPTION RATE	LISTINGS	ABSORPTION RATE	LISTINGS	ABSORPTION RATE
Studio	183	3.6	199	4.3	205	3.9
1-Bedroom	644	3.8	682	4.2	585	3.7
2-Bedroom	681	4.9	673	5.1	645	4.4
3+Bedroom	811	10.5	855	11.6	639	7.8
Loft	185	5.4	208	5.6	170	4.7
All	2,504	5.3	2,617	5.8	2,244	4.7

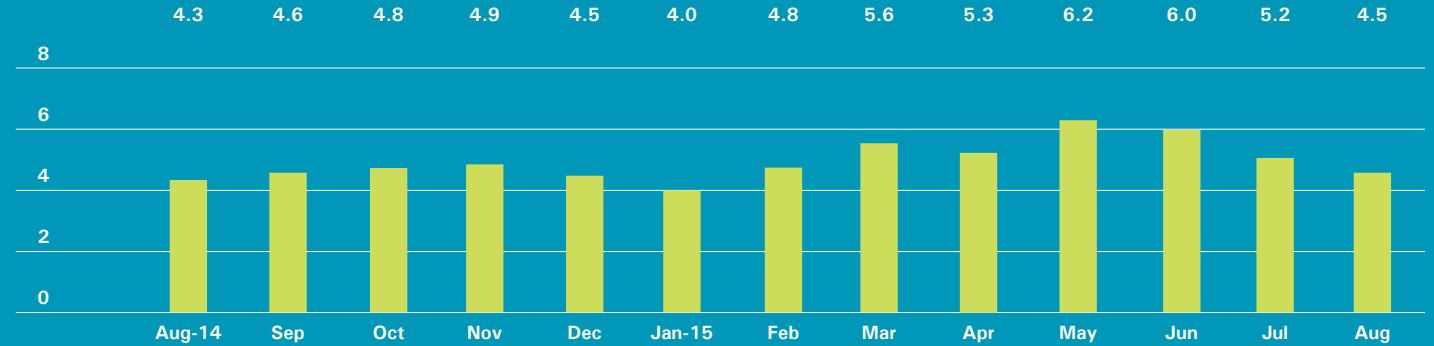
COOPERATIVES

	AUGUST 2015		JULY 2015		AUGUST 2014	
	LISTINGS	ABSORPTION RATE	LISTINGS	ABSORPTION RATE	LISTINGS	ABSORPTION RATE
Studio	326	3.0	361	3.4	380	3.3
1-Bedroom	534	2.2	604	2.6	694	2.8
2-Bedroom	471	2.9	504	3.2	546	3.1
3+Bedroom	447	5.2	486	6.0	407	5.9
Loft	151	3.8	170	4.3	169	3.8
All	1,929	3.0	2,125	3.4	2,196	3.4

East Side

Generally 59th St. to 96th St.,
Fifth Ave. to the East River

ABSORPTION RATE IN MONTHS: ALL APARTMENTS



CONDOMINIUMS

AUGUST 2015			JULY 2015		AUGUST 2014	
	LISTINGS	ABSORPTION RATE	LISTINGS	ABSORPTION RATE	LISTINGS	ABSORPTION RATE
Studio	19	3.7	22	5.3	33	6.0
1-Bedroom	94	4.6	105	6.2	70	3.4
2-Bedroom	116	6.0	125	6.8	99	4.5
3+Bedroom	156	8.5	169	9.6	138	6.4
All	385	6.1	421	7.4	340	4.9

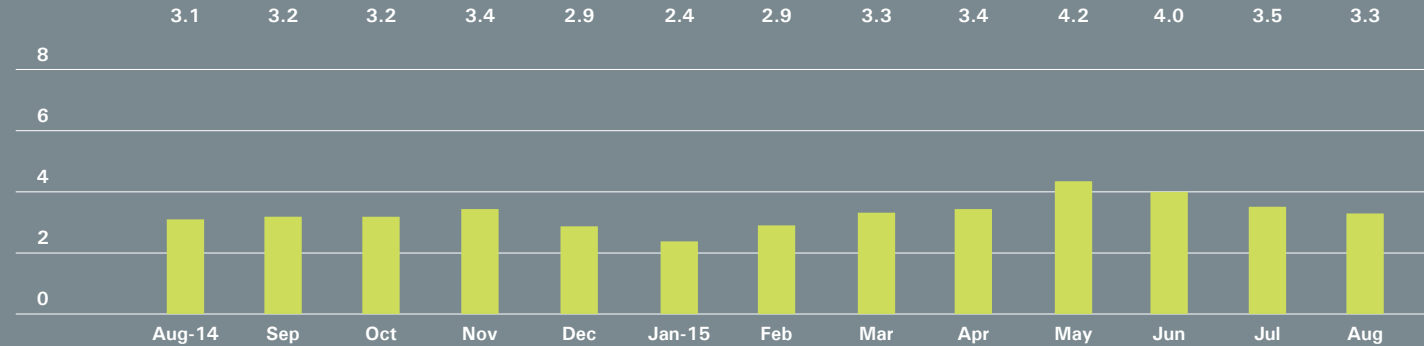
COOPERATIVES

AUGUST 2015			JULY 2015		AUGUST 2014	
	LISTINGS	ABSORPTION RATE	LISTINGS	ABSORPTION RATE	LISTINGS	ABSORPTION RATE
Studio	112	5.4	136	6.4	114	5.0
1-Bedroom	158	2.6	176	3.0	191	2.9
2-Bedroom	148	2.9	171	3.5	202	3.6
3+Bedroom	232	6.3	250	6.8	190	6.6
All	650	3.8	733	4.4	697	4.0

West Side

Generally 59th to 110th Street,
Hudson River to West of Fifth Avenue

ABSORPTION RATE IN MONTHS: ALL APARTMENTS



CONDOMINIUMS

	AUGUST 2015		JULY 2015		AUGUST 2014	
	LISTINGS	ABSORPTION RATE	LISTINGS	ABSORPTION RATE	LISTINGS	ABSORPTION RATE
Studio	19	2.9	24	4.0	31	4.8
1-Bedroom	82	3.2	85	3.5	84	3.2
2-Bedroom	93	5.2	85	5.7	69	3.0
3+Bedroom	150	8.9	155	9.9	98	4.7
All	344	5.1	349	5.8	282	3.7

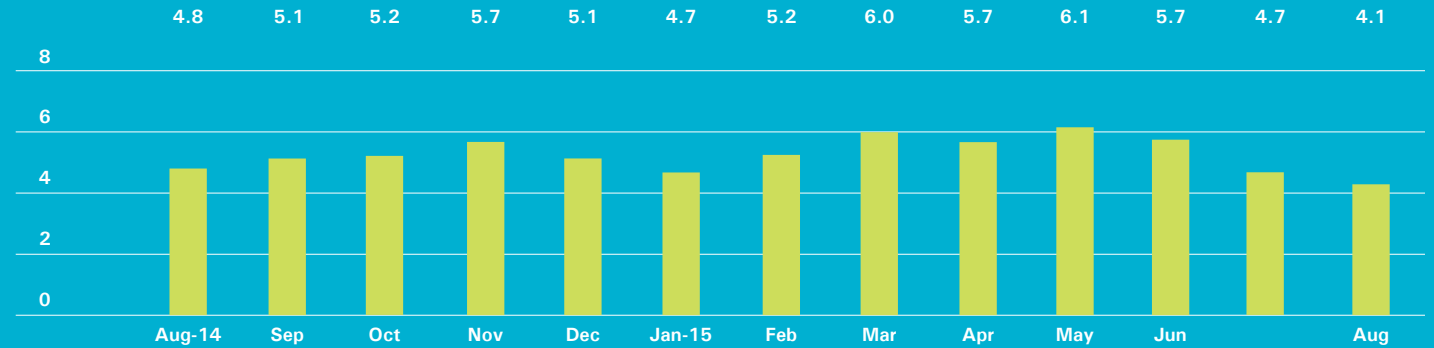
COOPERATIVES

	AUGUST 2015		JULY 2015		AUGUST 2014	
	LISTINGS	ABSORPTION RATE	LISTINGS	ABSORPTION RATE	LISTINGS	ABSORPTION RATE
Studio	45	2.4	47	2.5	60	3.1
1-Bedroom	92	2.0	106	2.2	108	2.2
2-Bedroom	77	1.9	79	1.9	98	2.3
3+Bedroom	79	3.5	86	4.3	93	5.2
All	293	2.3	318	2.5	359	2.8

Midtown East

Generally 34th to 59th Street,
Fifth Avenue to the East River

ABSORPTION RATE IN MONTHS: ALL APARTMENTS



CONDOMINIUMS

AUGUST 2015			JULY 2015		AUGUST 2014	
	LISTINGS	ABSORPTION RATE	LISTINGS	ABSORPTION RATE	LISTINGS	ABSORPTION RATE
Studio	29	2.9	29	2.8	28	6.0
1-Bedroom	104	3.5	110	3.9	78	4.4
2-Bedroom	107	5.5	113	6.8	101	6.4
3+Bedroom	98	15.1	103	18.2	63	14.5
All	338	5.1	355	5.8	270	6.3

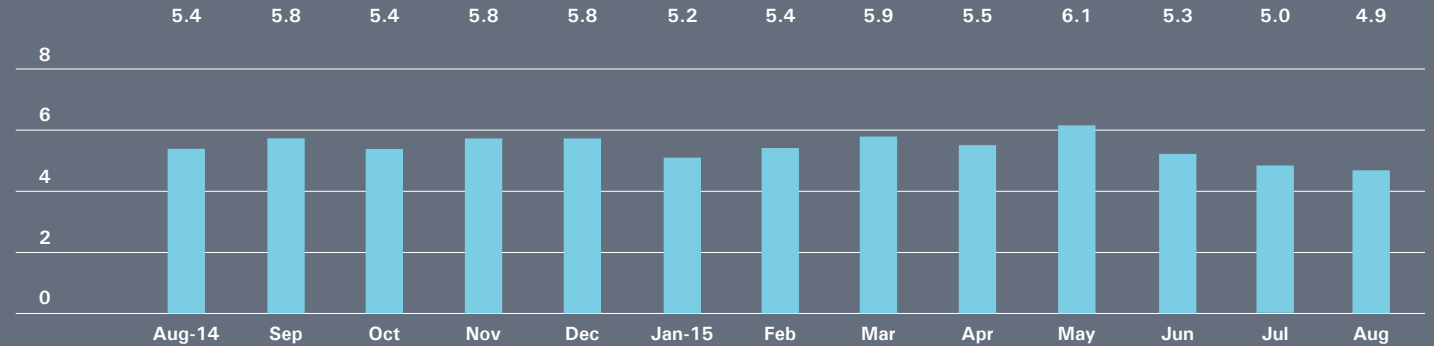
COOPERATIVES

AUGUST 2015			JULY 2015		AUGUST 2014	
	LISTINGS	ABSORPTION RATE	LISTINGS	ABSORPTION RATE	LISTINGS	ABSORPTION RATE
Studio	65	2.5	74	3.0	94	3.9
1-Bedroom	117	3.1	125	3.6	146	3.5
2-Bedroom	75	3.5	81	4.1	88	3.9
3+Bedroom	55	8.5	56	10.5	59	12.2
All	312	3.4	336	3.9	387	4.1

Midtown West

Generally 34th to 59th Street,
Hudson River to West of Fifth Avenue

ABSORPTION RATE IN MONTHS: ALL APARTMENTS



CONDOMINIUMS

	AUGUST 2015		JULY 2015		AUGUST 2014	
	LISTINGS	ABSORPTION RATE	LISTINGS	ABSORPTION RATE	LISTINGS	ABSORPTION RATE
Studio	24	2.3	25	2.4	25	2.6
1-Bedroom	114	4.5	119	4.5	104	6.2
2-Bedroom	103	6.2	98	5.5	93	6.3
3+Bedroom	74	14.8	70	14.5	66	16.5
All	315	5.5	312	5.2	288	6.4

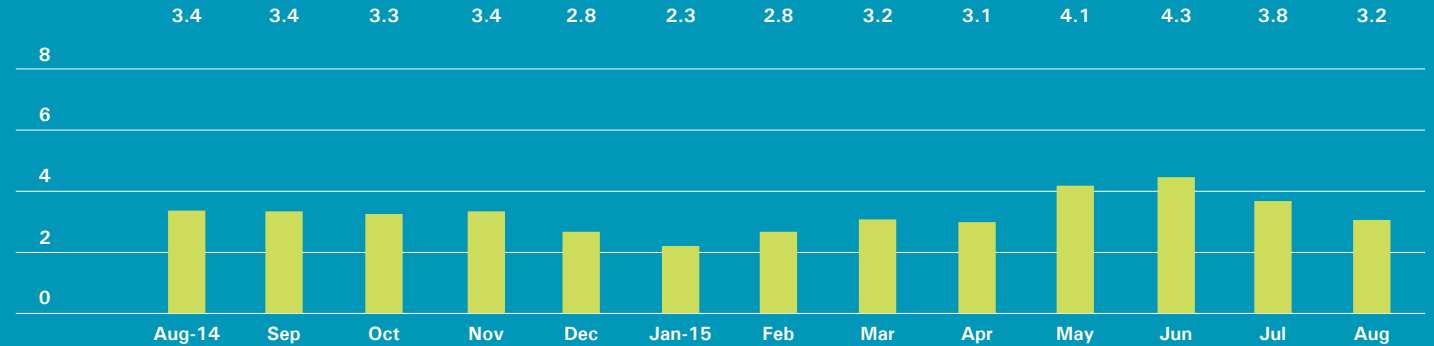
COOPERATIVES

	AUGUST 2015		JULY 2015		AUGUST 2014	
	LISTINGS	ABSORPTION RATE	LISTINGS	ABSORPTION RATE	LISTINGS	ABSORPTION RATE
Studio	22	3.0	22	3.9	17	2.4
1-Bedroom	31	3.0	32	3.1	35	3.2
2-Bedroom	31	6.2	30	6.7	22	4.4
3+Bedroom	13	3.9	17	5.4	15	7.5
All	97	3.8	101	4.3	89	3.6

Downtown

34th - 14th Street

ABSORPTION RATE IN MONTHS: ALL APARTMENTS



CONDOMINIUMS

AUGUST 2015			JULY 2015		AUGUST 2014	
	LISTINGS	ABSORPTION RATE	LISTINGS	ABSORPTION RATE	LISTINGS	ABSORPTION RATE
Studio	17	3.3	24	5.0	20	2.9
1-Bedroom	57	3.1	61	3.3	52	2.5
2-Bedroom	70	3.9	65	3.9	84	4.5
3+Bedroom	87	11.1	95	10.6	85	10.6
Loft	42	5.1	46	5.4	39	4.0
All	273	4.7	291	5.0	280	4.4

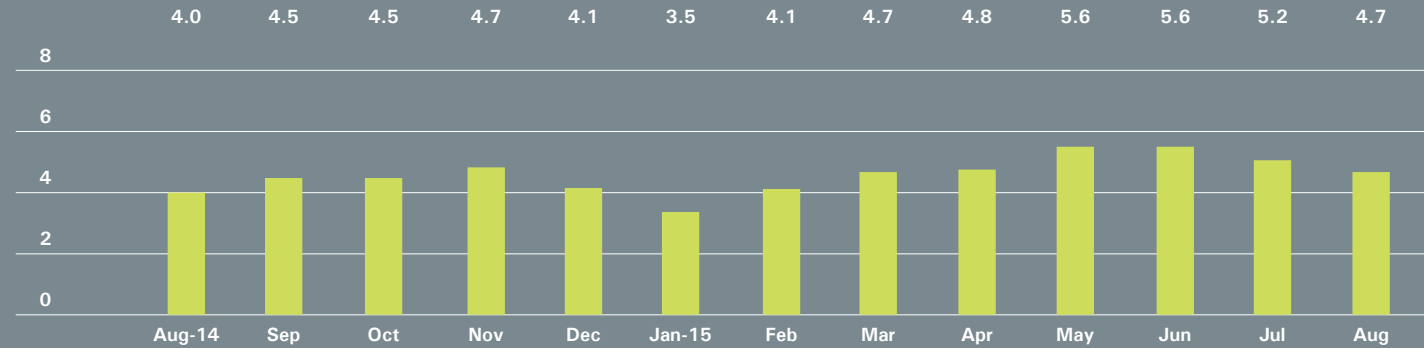
COOPERATIVES

AUGUST 2015			JULY 2015		AUGUST 2014	
	LISTINGS	ABSORPTION RATE	LISTINGS	ABSORPTION RATE	LISTINGS	ABSORPTION RATE
Studio	38	1.9	42	2.4	49	2.3
1-Bedroom	34	1.1	51	1.9	73	2.3
2-Bedroom	29	2.7	34	3.6	29	2.2
3+Bedroom	14	4.9	16	5.6	18	4.2
Loft	32	3.7	44	4.6	38	3.9
All	147	2.0	187	2.8	207	2.6

Downtown

South of 14th Street

ABSORPTION RATE IN MONTHS: ALL APARTMENTS



CONDOMINIUMS

	AUGUST 2015		JULY 2015		AUGUST 2014	
	LISTINGS	ABSORPTION RATE	LISTINGS	ABSORPTION RATE	LISTINGS	ABSORPTION RATE
Studio	59	5.1	63	6.6	63	3.9
1-Bedroom	156	5.0	162	5.2	145	3.4
2-Bedroom	151	5.1	155	5.8	135	4.2
3+Bedroom	217	15.9	237	23.3	157	12.2
Loft	123	5.5	136	5.4	117	5.1
All	706	6.5	753	7.3	617	4.9

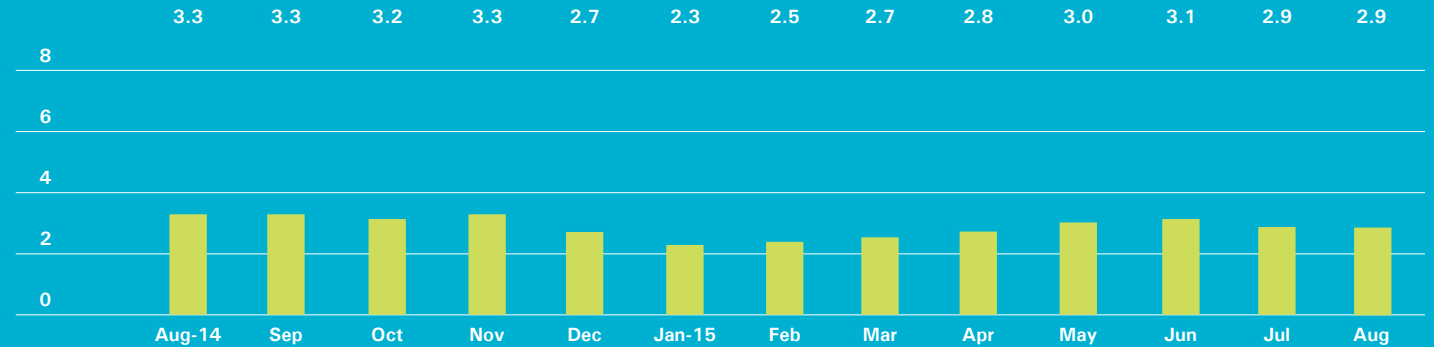
COOPERATIVES

	AUGUST 2015		JULY 2015		AUGUST 2014	
	LISTINGS	ABSORPTION RATE	LISTINGS	ABSORPTION RATE	LISTINGS	ABSORPTION RATE
Studio	42	2.8	39	2.8	41	2.4
1-Bedroom	65	1.6	69	1.8	91	2.6
2-Bedroom	58	3.0	55	3.0	56	3.0
3+Bedroom	28	5.4	35	7.5	11	2.5
Loft	80	3.7	85	4.0	90	3.8
All	273	2.7	283	2.9	289	2.9

Upper Manhattan

Generally North of 96th St. on the
East Side, and 110th St. on the West Side

ABSORPTION RATE IN MONTHS: ALL APARTMENTS



CONDOMINIUMS

AUGUST 2015			JULY 2015		AUGUST 2014	
	LISTINGS	ABSORPTION RATE	LISTINGS	ABSORPTION RATE	LISTINGS	ABSORPTION RATE
Studio	18	9.8	16	13.7	6	1.4
1-Bedroom	46	2.2	48	2.6	52	3.9
2-Bedroom	44	2.2	39	1.8	69	3.0
3+Bedroom	35	3.4	33	2.8	40	3.8
All	143	2.7	136	2.6	167	3.3

COOPERATIVES

AUGUST 2015			JULY 2015		AUGUST 2014	
	LISTINGS	ABSORPTION RATE	LISTINGS	ABSORPTION RATE	LISTINGS	ABSORPTION RATE
Studio	8	1.9	8	2.0	16	3.6
1-Bedroom	56	2.6	63	2.9	63	3.4
2-Bedroom	60	3.5	65	3.7	63	3.3
3+Bedroom	33	3.5	31	3.3	26	3.5
All	157	3.0	167	3.2	168	3.4



OFFICES

MANHATTAN PARK AVENUE

499 Park Avenue
New York, NY 10022
212.734.0010

EAST SIDE

770 Lexington Avenue
New York, NY 10065
212.317.7800

WEST SIDE

408 Columbus Avenue
New York, NY 10024
212.769.3000

VILLAGE

831 Broadway
New York, NY 10003
212.253.9300

SOHO

451 West Broadway
New York, NY 10012
212.253.9300

HARLEM

2169 Frederick Douglass Boulevard
New York, NY 10026
212.381.2570

WASHINGTON HEIGHTS

819 West 187th Street
New York, NY 10033
212.928.3805

RIVERDALE

RIVERDALE JOHNSON

3531 Johnson Avenue
Riverdale, NY 10463
718.878.1700

RIVERDALE MOSHOLU

5626 Mosholu Avenue
Riverdale, NY 10471
718.549.4116

BROOKLYN BROOKLYN HEIGHTS

150 Montague Street
Brooklyn, NY 11201
718.613.2000

BOERUM HILL

495 Atlantic Avenue
Brooklyn, NY 11217
718.613.2090

PARK SLOPE

76 Seventh Avenue
Brooklyn, NY 11217
718.399.2222

PARK SLOPE

244 Fifth Avenue
Brooklyn, NY 11215
718.622.9300

COBBLE HILL

162 Court Street
Brooklyn, NY 11201
718.613.2020

BEDFORD STUYVESANT

316 Stuyvesant Avenue
Brooklyn, NY 11233
718.613.2800

HUDSON VALLEY HUDSON

526 Warren Street
Hudson, NY 12534
518.828.0181

NEW JERSEY HOBOKEN

200 Washington Street
Hoboken, NJ 07030
201.478.6700

MONTCLAIR

635 Valley Road,
Montclair, NJ 07030
973.744.6033

CONNECTICUT DARIEN

671 Boston Post Road
Darien, CT 06820
203.655.1418

NEW CANAAN

183 Elm Street
New Canaan, CT 06840
203.966.7800

ROWAYTON

140 Rowayton Avenue
Rowayton, CT 06853
203.655.1418

GREENWICH

125 Mason Street
Greenwich, CT 06830
203.869.8100

GREENWICH

75 Holly Hill Lane
Greenwich, CT 06830
203.869.8100

STAMFORD

1099 High Ridge Road
Stamford, CT 06905
203.329.8801

WESTPORT

379 Post Road East
Westport, CT 06880
203.221.0666

WILTON

21 River Road
Wilton, CT 06897
203.762.8118

HAMPTONS EAST HAMPTON

2 Newtown Lane
East Hampton, NY 11937
631.324.6100

SOUTHAMPTON

31 Main Street
Southampton, NY 11968
631.283.2883

CORPORATE COMMERCIAL SALES

770 Lexington Avenue
New York, NY 10065
212.381.3208

DEVELOPMENT MARKETING

445 Park Avenue
New York, NY 10022
212.253.9300

GLOBAL SERVICES

770 Lexington Avenue
New York, NY 10065
800.765.2692 x6521

Prepared by Gregory Heym,
Chief Economist,
Halstead Property, LLC.

©2015 by Halstead Property, LLC. All
Rights Reserved. This information
may not be copied, commercially
used or distributed without
Halstead Property's prior consent.
While information is believed true,
no guaranty is made of accuracy.

