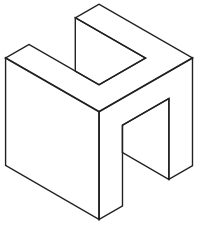


April 2018 Absorption Report Manhattan Apartments



HALSTEAD
REAL ESTATE

LUXURY PORTFOLIO
INTERNATIONAL

Leading REAL ESTATE
COMPANIES
OF THE WORLD.

April 2018 Highlights

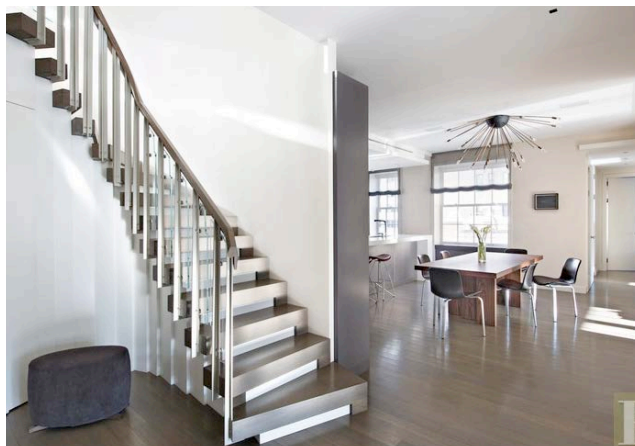
The absorption rate for Manhattan apartments rose to **7.2** months in April, from 6.6 months the prior month.

At **5.9** months, the absorption rate for coops remains well below the 8.8-month rate for condos.

Upper Manhattan was the tightest market with a **4.9**-month supply of units for sale.



halstead.com WEB# 17881436



halstead.com WEB# 17983201

Definitions

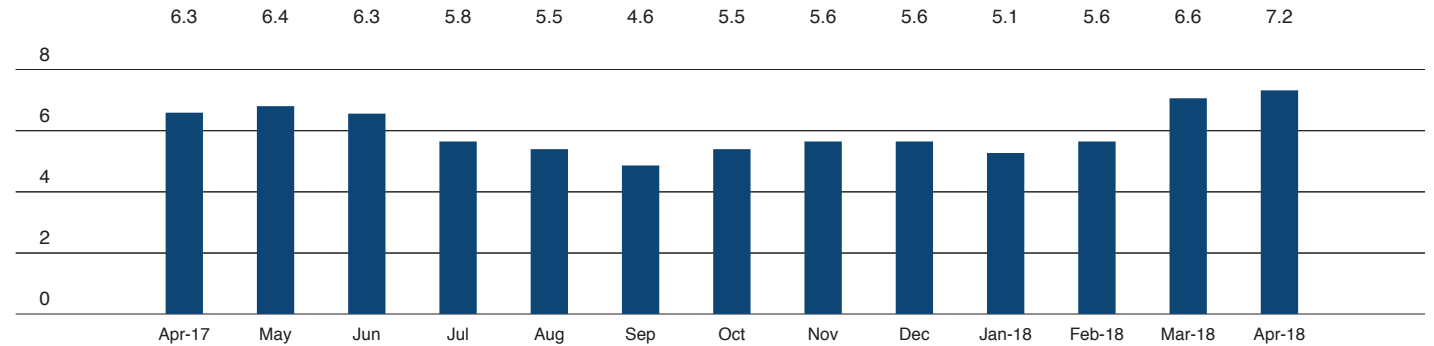
Listings: Number of active listings transmitted through the Real Estate Board of New York's listing service at the beginning of the month.

Absorption Rate: How many months it would take to sell all active listings in a given market. We calculate it by dividing the number of listings by the average number of closings over the prior 6 months. Historically, an absorption rate between 6-9 months indicates a balanced market.

Cover Property: halstead.com WEB# 18145439

Manhattan

Absorption Rate in Months: All Apartments



Condominiums

	APRIL 2018		MARCH 2018		APRIL 2017	
	LISTINGS	ABSORPTION RATE	LISTINGS	ABSORPTION RATE	LISTINGS	ABSORPTION RATE
Studio	233	6.9	212	6.1	203	5.3
1-Bedroom	903	6.7	841	6.0	886	5.9
2-Bedroom	1024	8.4	985	7.8	1079	7.8
3+Bedroom	1062	13.1	1007	12.0	1130	12.0
Loft	267	11.0	256	11.1	152	5.3
All	3,489	8.8	3,301	8.1	3,450	7.6

Cooperatives

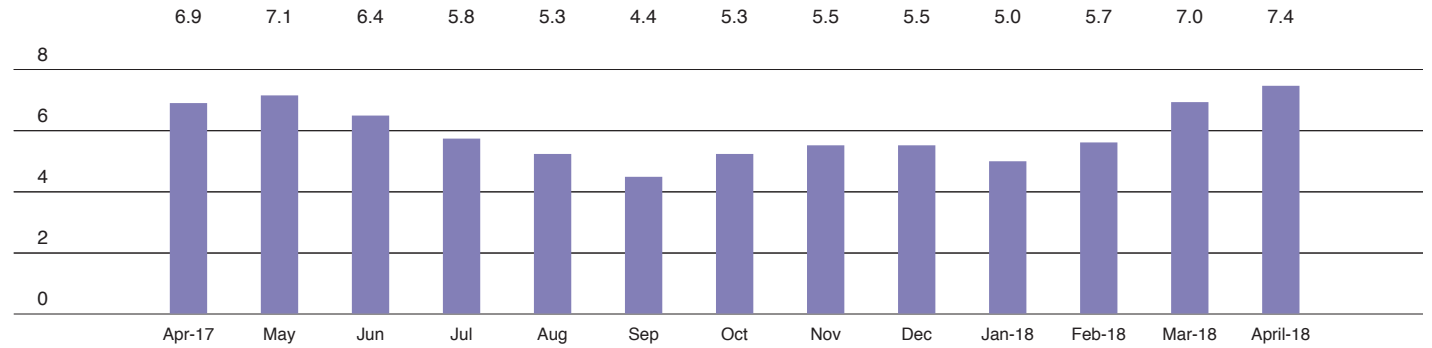
	APRIL 2018		MARCH 2018		APRIL 2017	
	LISTINGS	ABSORPTION RATE	LISTINGS	ABSORPTION RATE	LISTINGS	ABSORPTION RATE
Studio	340	4.2	331	3.9	245	2.7
1-Bedroom	827	4.6	798	4.3	766	3.9
2-Bedroom	784	5.8	732	5.4	698	5.6
3+Bedroom	666	11.5	594	10.2	613	11.2
Loft	239	7.6	215	6.5	158	5.5
All	2,856	5.9	2,670	5.4	2,480	5.0



East Side

Generally 59th Street to 96th Street,
Fifth Avenue to the East River

Absorption Rate in Months: All Apartments



Condominiums

	APRIL 2018		MARCH 2018		APRIL 2017	
	LISTINGS	ABSORPTION RATE	LISTINGS	ABSORPTION RATE	LISTINGS	ABSORPTION RATE
Studio	21	4.2	27	6.0	22	5.7
1-Bedroom	101	4.8	99	4.5	96	4.7
2-Bedroom	135	6.9	139	7.1	132	8.0
3+Bedroom	181	13.4	167	11.8	182	11.7
All	438	7.4	432	7.2	432	7.7

Cooperatives

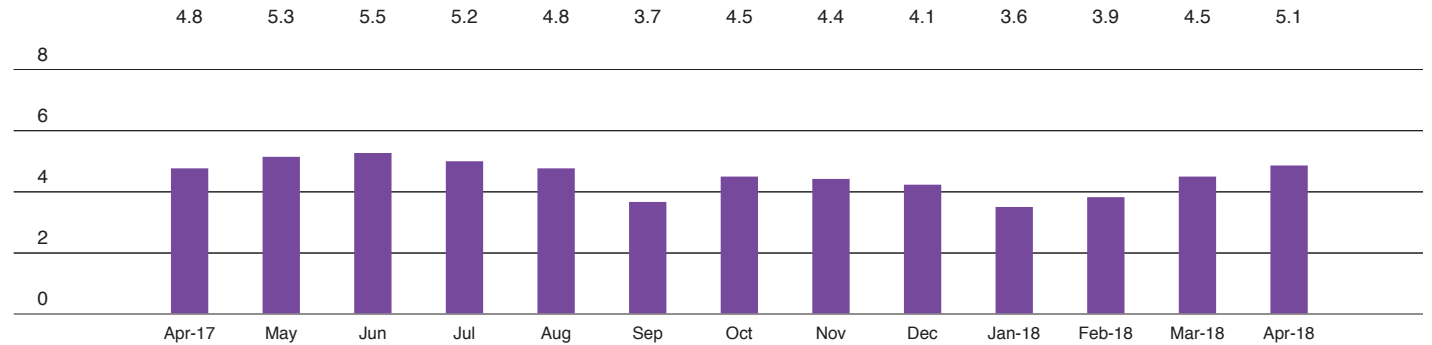
	APRIL 2018		MARCH 2018		APRIL 2017	
	LISTINGS	ABSORPTION RATE	LISTINGS	ABSORPTION RATE	LISTINGS	ABSORPTION RATE
Studio	82	4.1	85	4.5	64	3.1
1-Bedroom	247	5.3	245	5.0	200	4.6
2-Bedroom	257	6.8	252	6.6	241	6.4
3+Bedroom	345	15.7	297	13.6	283	14.8
All	931	7.4	879	6.9	788	6.5



West Side

Generally 59th to 110th Street,
Hudson River to West of Fifth Avenue

Absorption Rate in Months: All Apartments



Condominiums

	APRIL 2018		MARCH 2018		APRIL 2017	
	LISTINGS	ABSORPTION RATE	LISTINGS	ABSORPTION RATE	LISTINGS	ABSORPTION RATE
Studio	17	3.8	16	3.4	21	4.3
1-Bedroom	115	4.5	92	3.7	92	5.4
2-Bedroom	125	5.3	114	4.2	114	6.3
3+Bedroom	158	8.4	157	7.4	176	9.7
All	415	5.7	379	4.8	403	6.9

Cooperatives

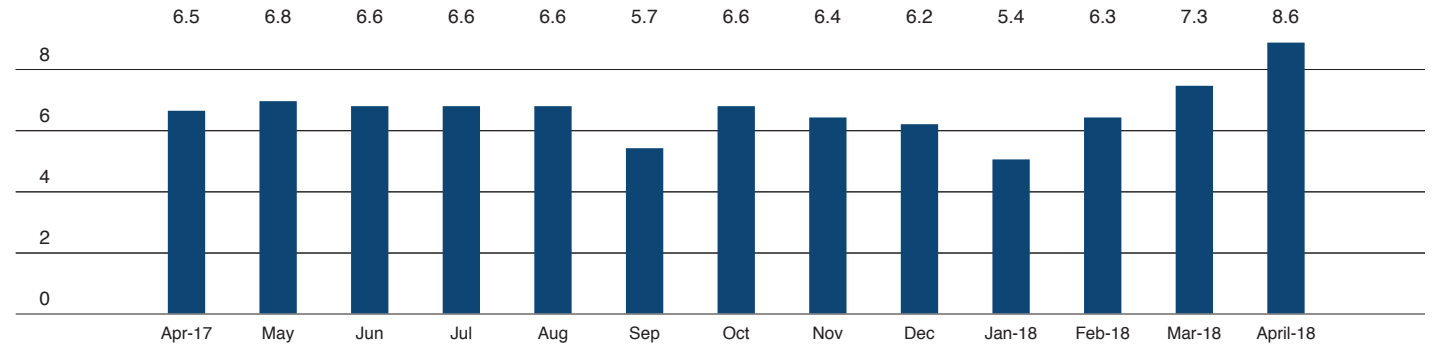
	APRIL 2018		MARCH 2018		APRIL 2017	
	LISTINGS	ABSORPTION RATE	LISTINGS	ABSORPTION RATE	LISTINGS	ABSORPTION RATE
Studio	50	4.2	40	3.2	19	1.4
1-Bedroom	126	3.9	129	3.8	113	2.7
2-Bedroom	131	4.2	127	4.1	110	4.0
3+Bedroom	117	6.6	111	6.0	112	6.6
All	424	4.5	407	4.2	354	3.5



Midtown East

Generally 34th to 59th Street,
Fifth Avenue to the East River

Absorption Rate in Months: All Apartments



Condominiums

	APRIL 2018		MARCH 2018		APRIL 2017	
	LISTINGS	ABSORPTION RATE	LISTINGS	ABSORPTION RATE	LISTINGS	ABSORPTION RATE
Studio	38	8.4	31	7.2	29	4.5
1-Bedroom	164	10.3	143	7.9	145	6.4
2-Bedroom	144	13.7	128	10.7	126	7.2
3+Bedroom	132	11.8	123	11.9	121	12.5
All	478	11.3	425	9.5	421	7.5

Cooperatives

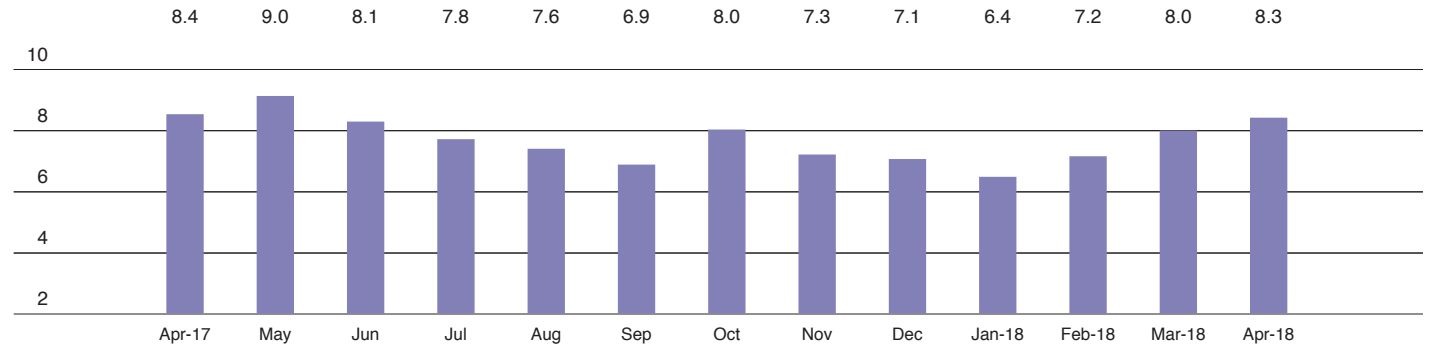
	APRIL 2018		MARCH 2018		APRIL 2017	
	LISTINGS	ABSORPTION RATE	LISTINGS	ABSORPTION RATE	LISTINGS	ABSORPTION RATE
Studio	77	3.9	82	3.6	63	2.7
1-Bedroom	187	5.9	166	4.9	150	4.7
2-Bedroom	160	8.4	147	8.5	118	9.4
3+Bedroom	98	23.5	90	18.6	87	14.5
All	522	7.0	485	6.1	418	5.7



Midtown West

Generally 34th to 59th Street,
Hudson River to West of Fifth Avenue

Absorption Rate in Months: All Apartments



Condominiums

	APRIL 2018		MARCH 2018		APRIL 2017	
	LISTINGS	ABSORPTION RATE	LISTINGS	ABSORPTION RATE	LISTINGS	ABSORPTION RATE
Studio	34	5.1	29	4.0	26	3.1
1-Bedroom	140	7.2	131	6.8	154	7.5
2-Bedroom	106	8.3	115	9.3	147	9.6
3+Bedroom	101	33.7	99	29.7	105	30.0
All	381	9.1	374	8.9	432	9.0

Cooperatives

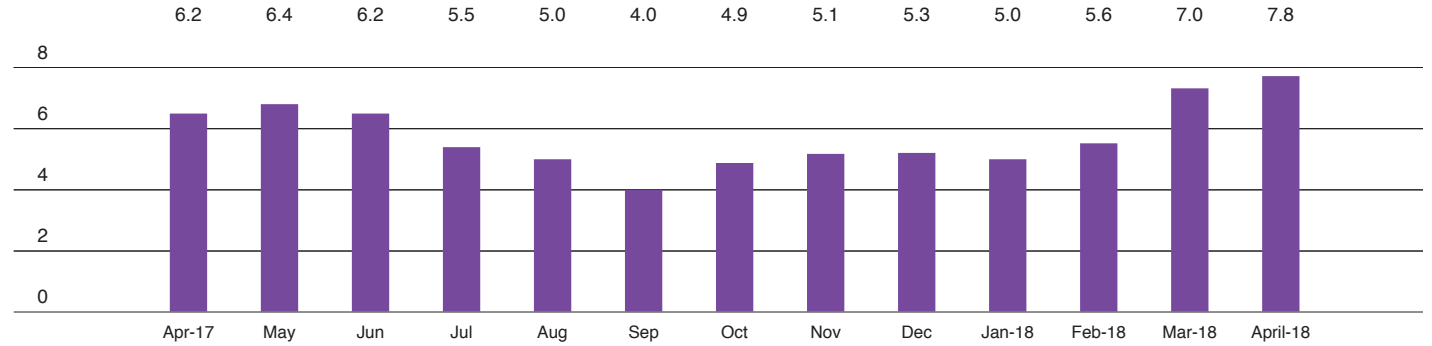
	APRIL 2018		MARCH 2018		APRIL 2017	
	LISTINGS	ABSORPTION RATE	LISTINGS	ABSORPTION RATE	LISTINGS	ABSORPTION RATE
Studio	20	3.6	17	3.4	12	3.4
1-Bedroom	40	4.9	39	5.1	42	6.1
2-Bedroom	34	13.6	30	9.0	25	7.5
3+Bedroom	12	24.0	8	12.0	14	16.8
All	106	6.4	94	5.6	93	6.4



Downtown

34th - 14th Street

Absorption Rate in Months: All Apartments



	APRIL 2018		MARCH 2018		APRIL 2017	
	LISTINGS	ABSORPTION RATE	LISTINGS	ABSORPTION RATE	LISTINGS	ABSORPTION RATE
Studio	25	7.5	16	5.1	12	3.3
1-Bedroom	102	5.3	91	4.8	116	6.2
2-Bedroom	155	9.8	147	10.3	180	10.3
3+Bedroom	142	14.7	134	14.4	166	12.1
Loft	71	12.5	67	13.0	28	5.3
All	495	9.2	455	8.9	502	8.5

Cooperatives

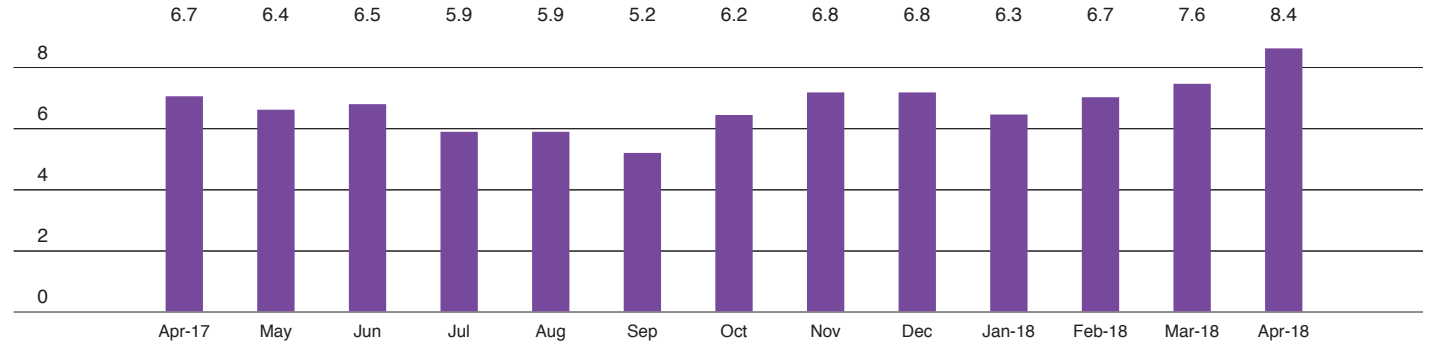
	APRIL 2018		MARCH 2018		APRIL 2017	
	LISTINGS	ABSORPTION RATE	LISTINGS	ABSORPTION RATE	LISTINGS	ABSORPTION RATE
Studio	57	5.2	56	4.8	37	2.4
1-Bedroom	97	4.6	94	4.1	79	3.2
2-Bedroom	60	7.3	46	4.7	48	5.6
3+Bedroom	26	9.8	23	8.6	27	12.5
Loft	75	10.0	68	9.5	39	5.0
All	315	6.2	287	5.3	230	3.9



Downtown

South of 14th Street

Absorption Rate in Months: All Apartments



Condominiums

	APRIL 2018		MARCH 2018		APRIL 2017	
	LISTINGS	ABSORPTION RATE	LISTINGS	ABSORPTION RATE	LISTINGS	ABSORPTION RATE
Studio	83	9.4	79	8.0	86	9.6
1-Bedroom	227	9.3	224	8.6	239	6.0
2-Bedroom	278	9.0	272	8.7	308	7.4
3+Bedroom	307	15.4	285	14.3	317	11.2
Loft	183	11.1	170	10.5	116	5.8
All	1,078	10.7	1,030	10.0	1,066	7.7

Cooperatives

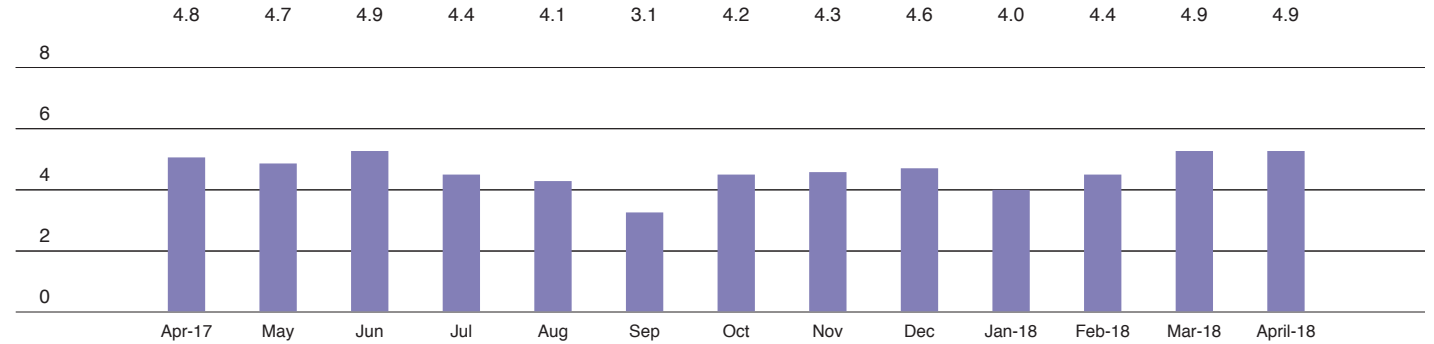
	APRIL 2018		MARCH 2018		APRIL 2017	
	LISTINGS	ABSORPTION RATE	LISTINGS	ABSORPTION RATE	LISTINGS	ABSORPTION RATE
Studio	53	4.5	51	4.0	43	3.5
1-Bedroom	115	4.3	109	3.8	135	4.1
2-Bedroom	90	5.0	81	4.4	89	4.6
3+Bedroom	43	8.9	39	8.4	43	12.9
Loft	117	7.0	106	5.8	112	7.1
All	418	5.3	386	4.7	422	5.0



Upper Manhattan

Generally North of 96th Street on the East Side, and 110th Street on the West Side

Absorption Rate in Months: All Apartments



Condominiums

	APRIL 2018		MARCH 2018		APRIL 2017	
	LISTINGS	ABSORPTION RATE	LISTINGS	ABSORPTION RATE	LISTINGS	ABSORPTION RATE
Studio	17	11.3	17	10.2	7	3.8
1-Bedroom	58	6.0	65	6.7	47	3.8
2-Bedroom	85	8.4	76	7.2	74	5.3
3+Bedroom	44	8.0	48	8.2	66	10.7
All	204	7.6	206	7.4	194	5.6

Cooperatives

	APRIL 2018		MARCH 2018		APRIL 2017	
	LISTINGS	ABSORPTION RATE	LISTINGS	ABSORPTION RATE	LISTINGS	ABSORPTION RATE
Studio	10	3.3	8	2.4	8	2.5
1-Bedroom	36	2.3	36	2.6	47	2.7
2-Bedroom	59	3.1	55	2.9	70	4.4
3+Bedroom	35	5.5	33	5.8	50	8.1
All	140	3.2	132	3.2	175	4.1



HALSTEAD

REAL ESTATE

OFFICES

MANHATTAN PARK AVENUE

499 Park Avenue
New York, NY 10022
212.734.0010

EAST SIDE

770 Lexington Avenue
New York, NY 10065
212.317.7800

WEST SIDE

408 Columbus Avenue
New York, NY 10024
212.769.3000

VILLAGE

831 Broadway
New York, NY 10003
212.381.6500

SOHO

451 West Broadway
New York, NY 10012
212.381.4200

HARLEM

2169 Frederick Douglass Boulevard
New York, NY 10026
212.381.2570

WASHINGTON HEIGHTS

819 West 187th Street
New York, NY 10033
212.381.2452

BRONX RIVERDALE JOHNSON

3531 Johnson Avenue
Riverdale, NY 10463
718.878.1700

RIVERDALE MOSHOLU

5626 Mosholu Avenue
Riverdale, NY 10471
718.549.4116

BROOKLYN BROOKLYN HEIGHTS

122 Montague Street
Brooklyn, NY 11201
718.613.2000

NORTH SLOPE

76 Seventh Avenue
Brooklyn, NY 11217
718.399.2222

PARK SLOPE

160 7th Avenue
Brooklyn, NY 11215
718.878.1960

COBBLE HILL

162 Court Street
Brooklyn, NY 11201
718.613.2020

BEDFORD STUYVESANT

316 Stuyvesant Avenue
Brooklyn, NY 11233
718.613.2800

SOUTH SLOPE

1214 8th Avenue
Brooklyn, NY 11215
718.878.1888

FORT GREENE

725 Fulton Street
Brooklyn, NY 1127
718.613.2800

HUDSON VALLEY HUDSON

526 Warren Street
Hudson, NY 12534
518.828.0181

CONNECTICUT DARIEN

671 Boston Post Road
Darien, CT 06820
203.655.1418

NEW CANAAN - ELM STREET

183 Elm Street
New Canaan, CT 06840
203.966.7800

NEW CANAAN - SOUTH AVENUE

6 South Avenue
New Canaan, CT 06840
203.966.7772

ROWAYTON

140 Rowayton Avenue
Rowayton, CT 06853
203.655.1418

GREENWICH

125 Mason Street
Greenwich, CT 06830
203.869.8100

STAMFORD

1099 High Ridge Road
Stamford, CT 06905
203.329.8801

WESTPORT

379 Post Road East
Westport, CT 06880
203.221.0666

WILTON

21 River Road
Wilton, CT 06897
203.762.8118

QUEENS LONG ISLAND CITY

47-12 Vernon Boulevard
Queens, NY 1110
718.878.1800

FOREST HILLS

108-23 Ascan Avenue
Forest Hills, NY 11375
Main #: 718-520-0303

NEW JERSEY HOBOKEN

200 Washington Street
Hoboken, NJ 07030
201.478.6700

MONTCLAIR

635 Valley Road,
Montclair, NJ 07030
973.744.6033

HAMPTONS EAST HAMPTON

2 Newtown Lane
East Hampton, NY 11937
631.324.6100

SOUTHAMPTON

31 Main Street
Southampton, NY 11968
631.283.2883

CORPORATE COMMERCIAL SALES

770 Lexington Avenue
New York, NY 10065
212.381.3208

DEVELOPMENT MARKETING

445 Park Avenue
New York, NY 10022
212.521.5703

GLOBAL SERVICES

770 Lexington Avenue
New York, NY 10065
212.381.6521

MANAGEMENT COMPANY

770 Lexington Avenue, 7th floor
New York, NY, 10065
212.508.7272

Prepared by Lisa Rae Castrigno,
SVP of Research.

©2018 by Halstead Property, LLC. All Rights Reserved. This information may not be copied, commercially used or distributed without Halstead's prior consent. While information is believed true, no guaranty is made of accuracy.

